

# PLAT

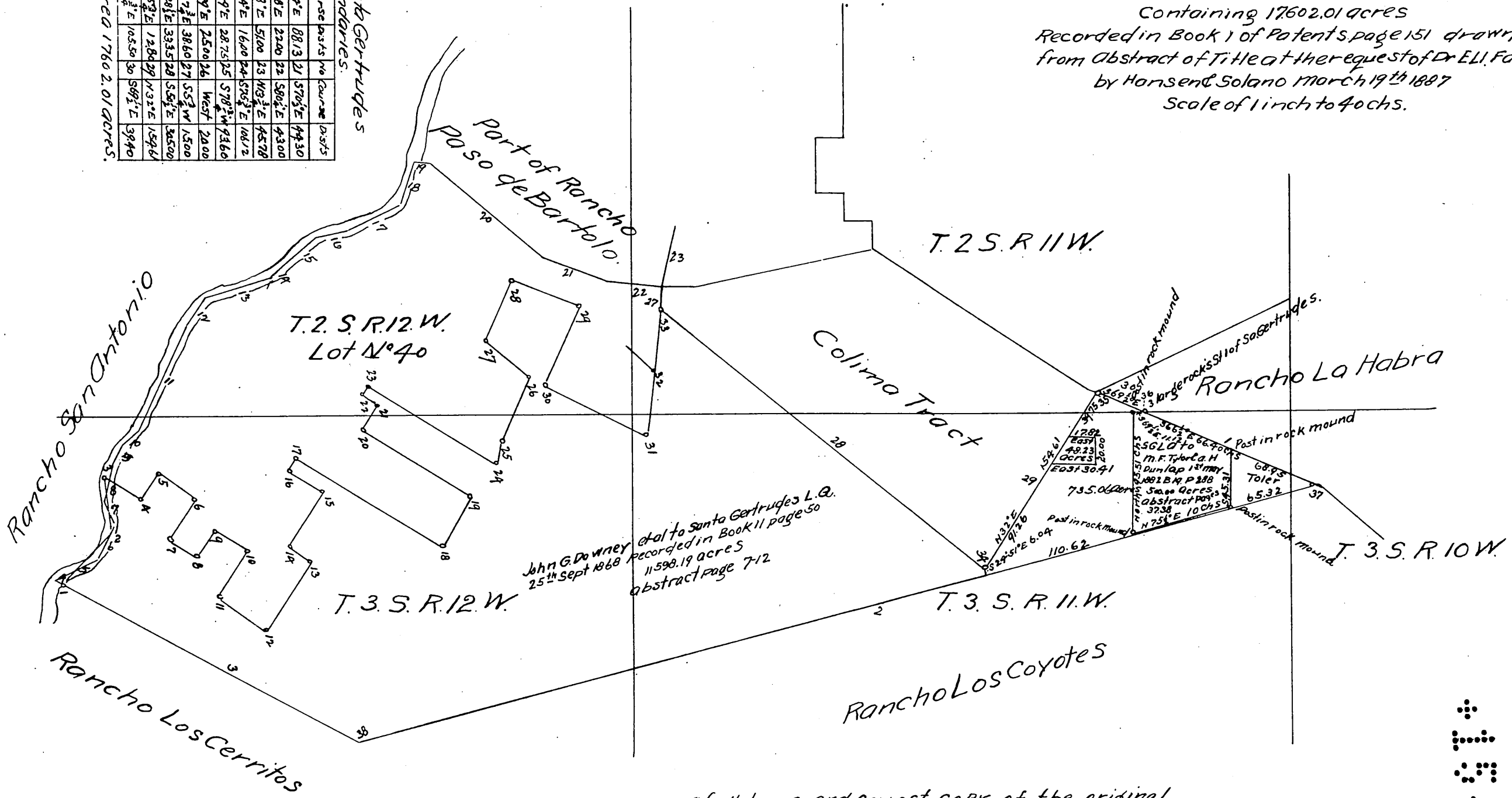
of the part of the  
**Rancho Santa Gertrudes**

finally confirmed to  
 James P. McFarland and John G. Downey  
 Containing 17602.01 acres  
 Recorded in Book 1 of Patents, page 151 drawn  
 from Abstract of Title at the request of Dr. Eli Fay  
 by Hansen & Solano March 19<sup>th</sup> 1887  
 Scale of 1 inch to 40 chs.

No	Courses	Dist	No	Courses	Dist	No	Courses	Dist
1	S 66° E	13800	11	N 90° E	8813.31	27	S 70° E	4430
2	S 75° W	7900	12	N 40° E	2200	22	S 80° E	4300
3	N 60° W	25400	13	N 68° E	5100	23	N 3° E	4578
4	N 75° E	750	14	N 44° E	1600	24	N 3° E	10612
5	N 59° E	2850	15	N 49° E	2875	25	S 78° W	9360
6	N 22° E	2250	16	N 79° E	2500	26	West	2000
7	N 10° W	1800	17	N 67° E	3860	27	S 5° W	1500
8	N 4° E	2400	18	N 28° E	3335	28	S 5° E	3650
9	N 53° E	2130	19	S 25° E	1280	29	N 32° E	1596
10	N 54° E	1050	20	S 55° E	1050	30	S 91° E	3940

Area 17602.01 acres.

Rancho Santa Gertrudes  
 Boundaries.



a full true and correct copy of the original.  
 (reduced to the scale of 80 chs to one inch.)  
 recorded March 22, 1887 at 37 min past 3  
 P.M. at request of Rev Eli Fay.

Frank A Gibson County Recorder.  
 By Geo Bugbee Deputy.

