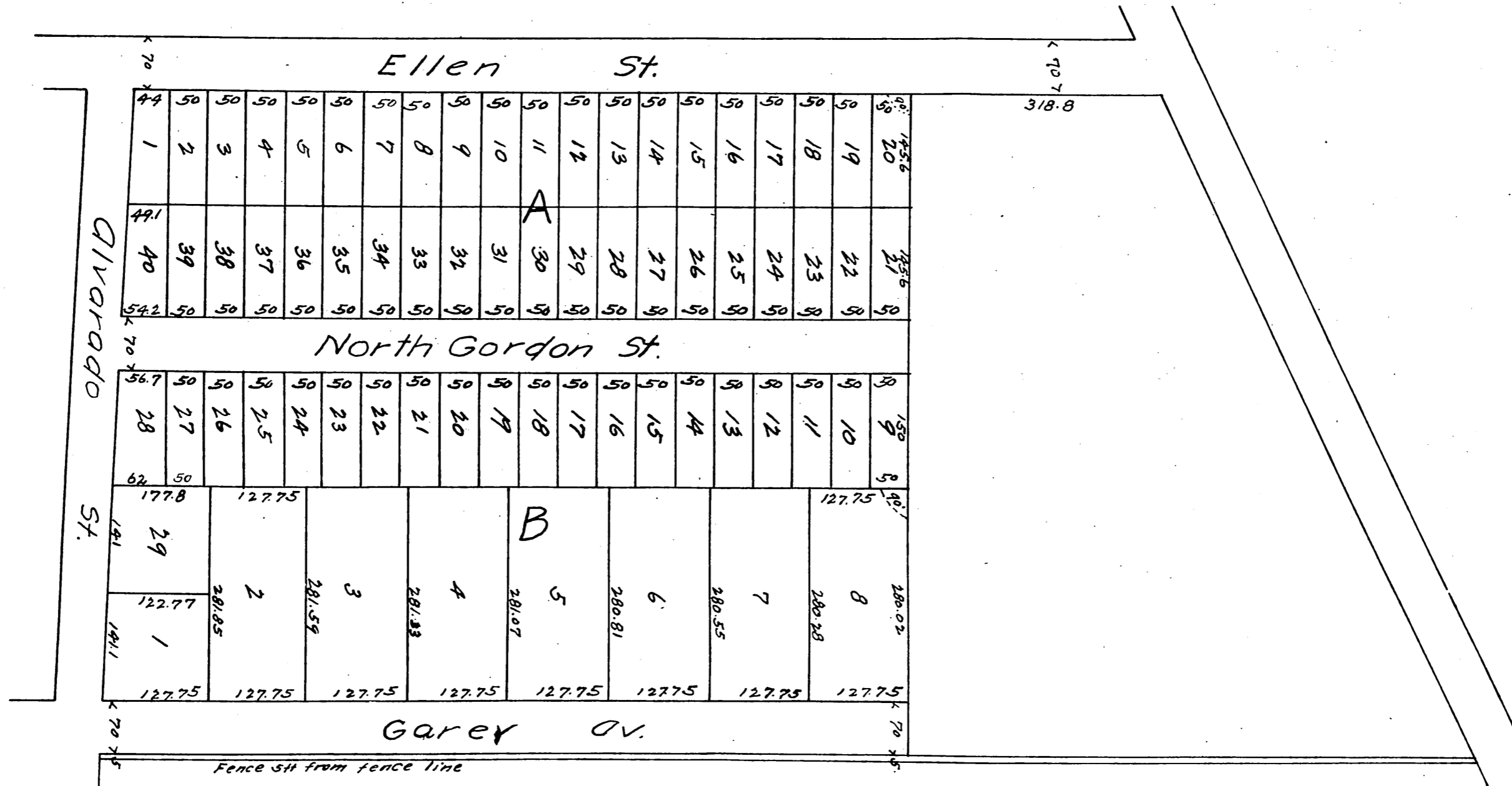


Official  
**PLAT**  
 OF  
**Firey, French & Rhorer's**  
 Subdivision of the South twenty acres of the Burbank Tract  
 Pomona, Cal.

including the strip of land contained between Burbank Tract and Eastline of Ellen St.  
 Surveyed Jan 20, 1887 Reed & Co Civil Engineers.



A full true and correct copy of the original,  
 reduced to the scale of 150 feet to one inch,  
 recorded March 23, 1887 at 3 min Post Office,  
 at request of CHAS FRENCH.  
 Frank P. Wilson County Recorder  
 By Geo. Bunker Deputy.

