

# MAP OF Rhorer & French's Subdivision

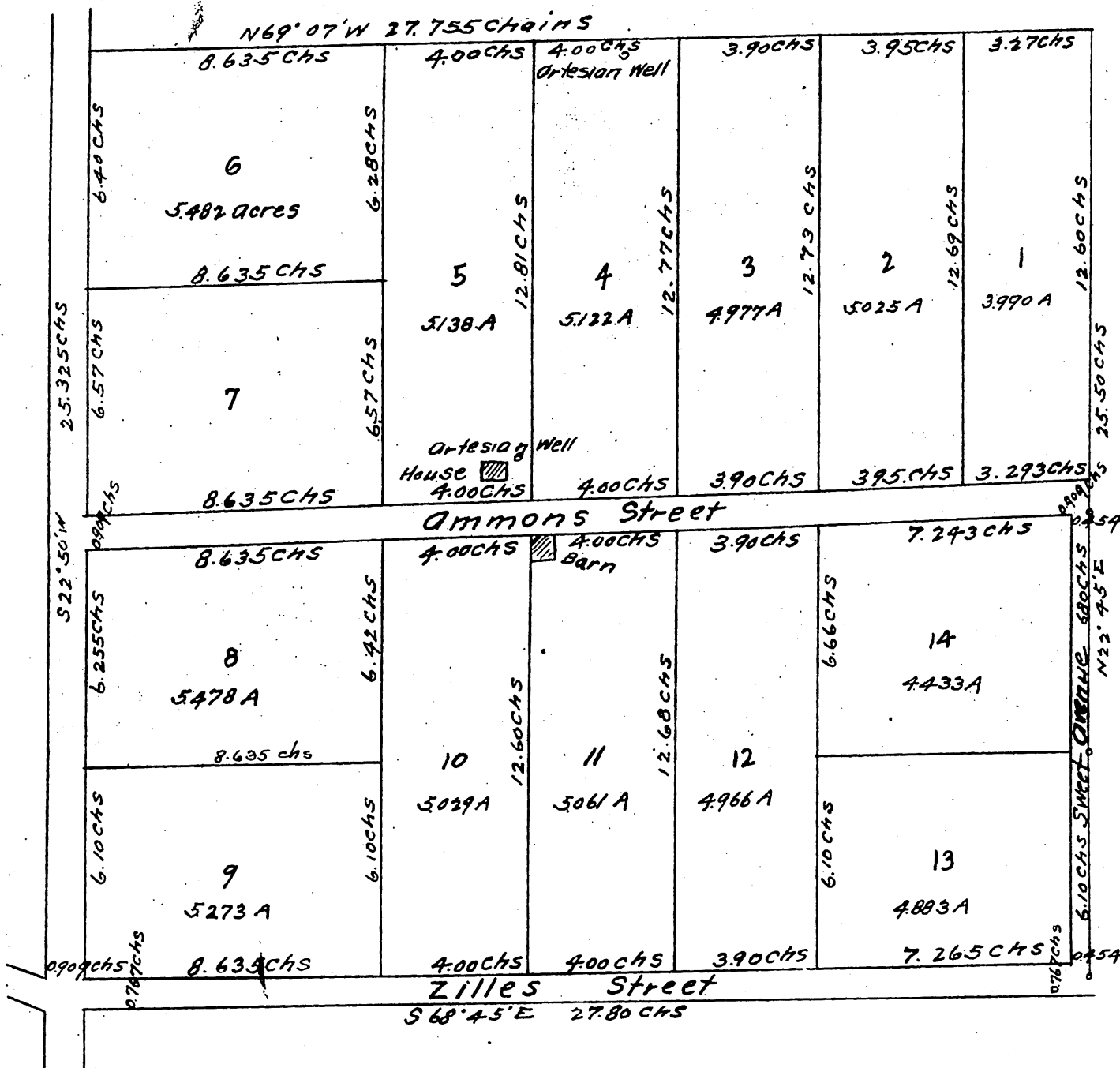
of the Rodgers Tract in the Rancho San Jose

Los Angeles Co. Cal.

Surveyed December 1886 Jas T. Taylor Surveyor.

Scale 1 inch = 2 chains

All areas and distances to the center of streets.



A full, true and correct copy of the original (reduced to scale of 4 chains to one inch) recorded Mar 23, 1887 at 4 min past 8 A.M. at request of Chas French.

Frank A. Gibson County Recorder.  
By Geo Bugbee Deputy.