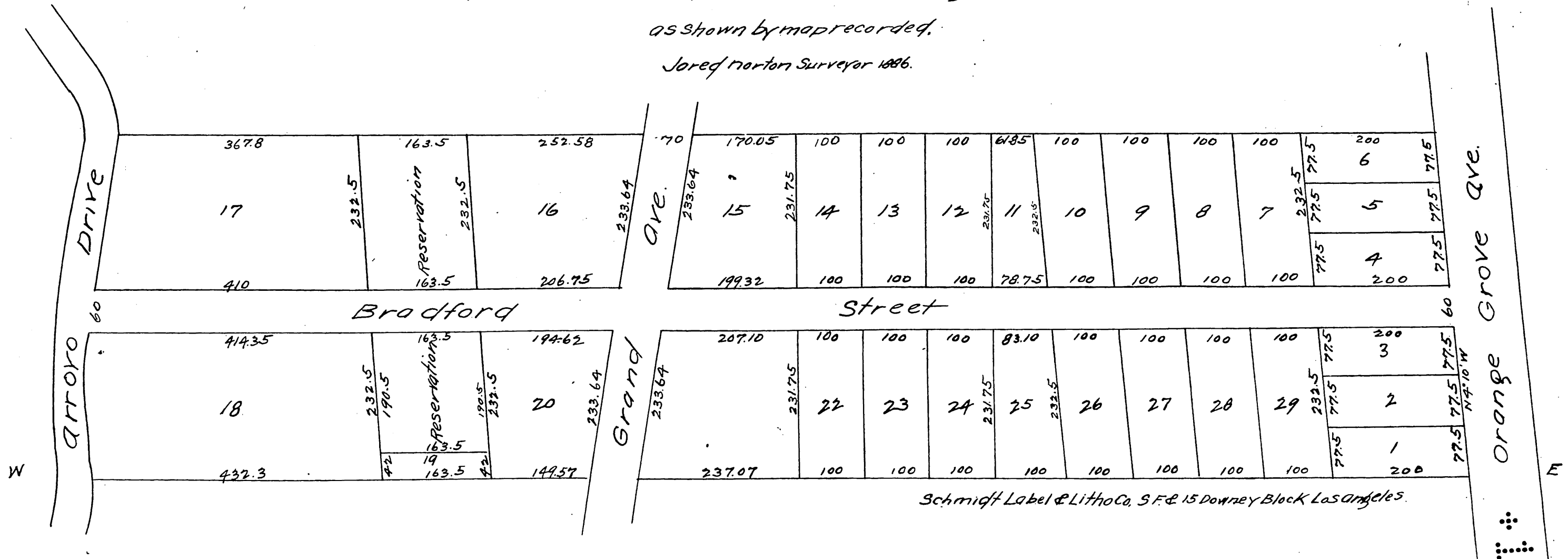


The undersigned hereby certifies that he is the owner of the land subdividing this plat and that said land is the same that is shown on a map of the lands of the San Gabriel Orange Grove Association as the same is recorded in the County Recorder's Office in Book 2 of Miscellaneous Records Page 557 and marked "Holmes" in Division E, excepting a strip 70 feet in width off of the northern side of said Holmes tract, that the North easterly corner of land as shown in this map is 690 feet 3 inches Southwesterly from the center of California Street as shown on the map above referred to by actual measurement made by J. M. Willard C. E. of Pasadena.

Los Angeles Cal., July 14, 1887.
H. J. Holmes.

PLAT OF H. J. Holmes' Subdivision,

of Division E of the lands of the San Gabriel Orange Grove Association,
as shown by map recorded,
Jared Norton Surveyor 1886.



a full, true, and correct copy of the original,
recorded March 23 1887 at 50 min Past 100. M.
at request of H. J. Holmes.

Frank A. Gibson county Recorder.

By Geo Bugbee Deputy.