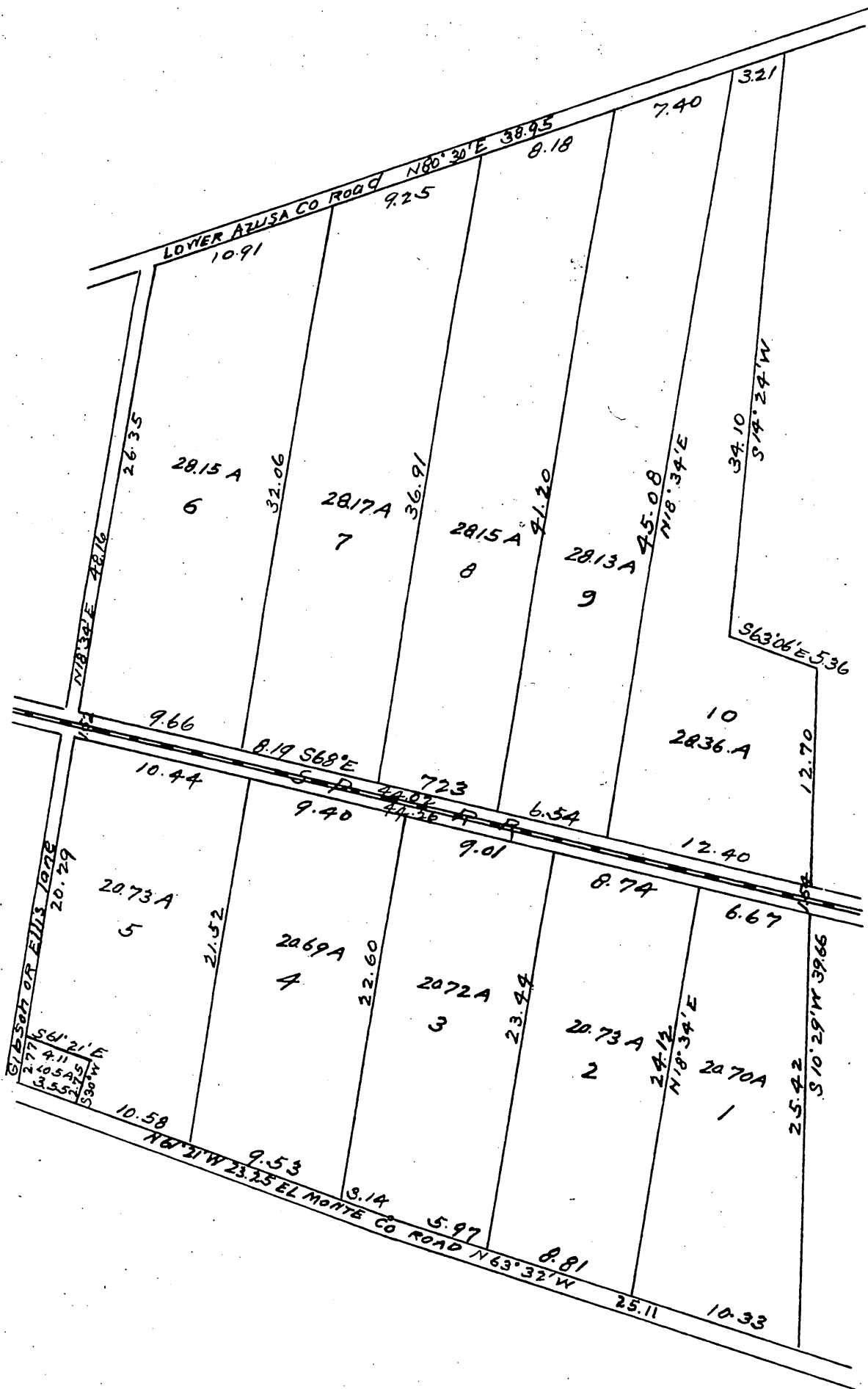


# MAP

OF  
**F. W. Gibson's Tract**  
 El Monte, Cal.

Surveyed Nov 1886 by E. T. Wright  
 Scale 4 chs to one inch



a full, true and correct copy of the original.  
 (reduced to the scale of 8 chains to one inch)  
 recorded March 23, 1887 at 52 min Past 11  
 A.M at request of J. G. Howard  
 Frank A. Gibson county Recorder.  
 By Geo Bugbee Deputy.