

1540

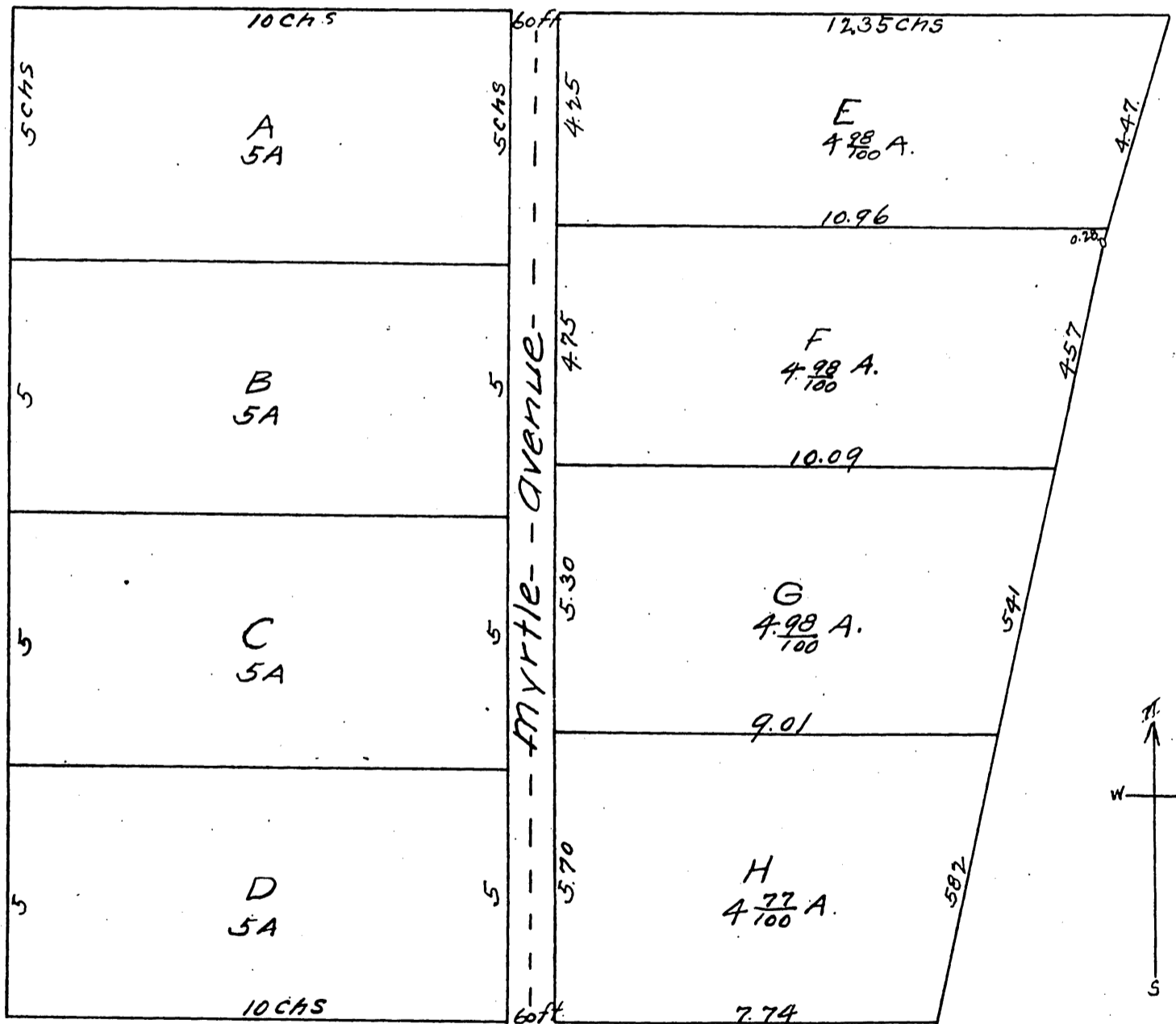
MAP OF THE Stewart & Mulford Subdivision

of $39\frac{80}{100}$ acres part of Lot no 6 Section 35 in
Rancho Azusa de Duarte near Monrovia Station

Los Angeles County California

Surveyed March 1887 by J. S. McDonald, C.E.

Scale $\frac{1}{2}$ inch equals 1 chain.



A full, true and correct copy of the original
(reduced to the scale of 3 chains to one inch)
recorded March 24, 1887 at 15 min past 9.9 AM
at request of S. P. Mulford.

Frank A. Gibson County Recorder.
By Geo Ryker Deputy.