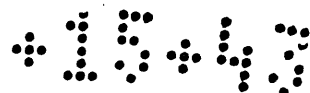
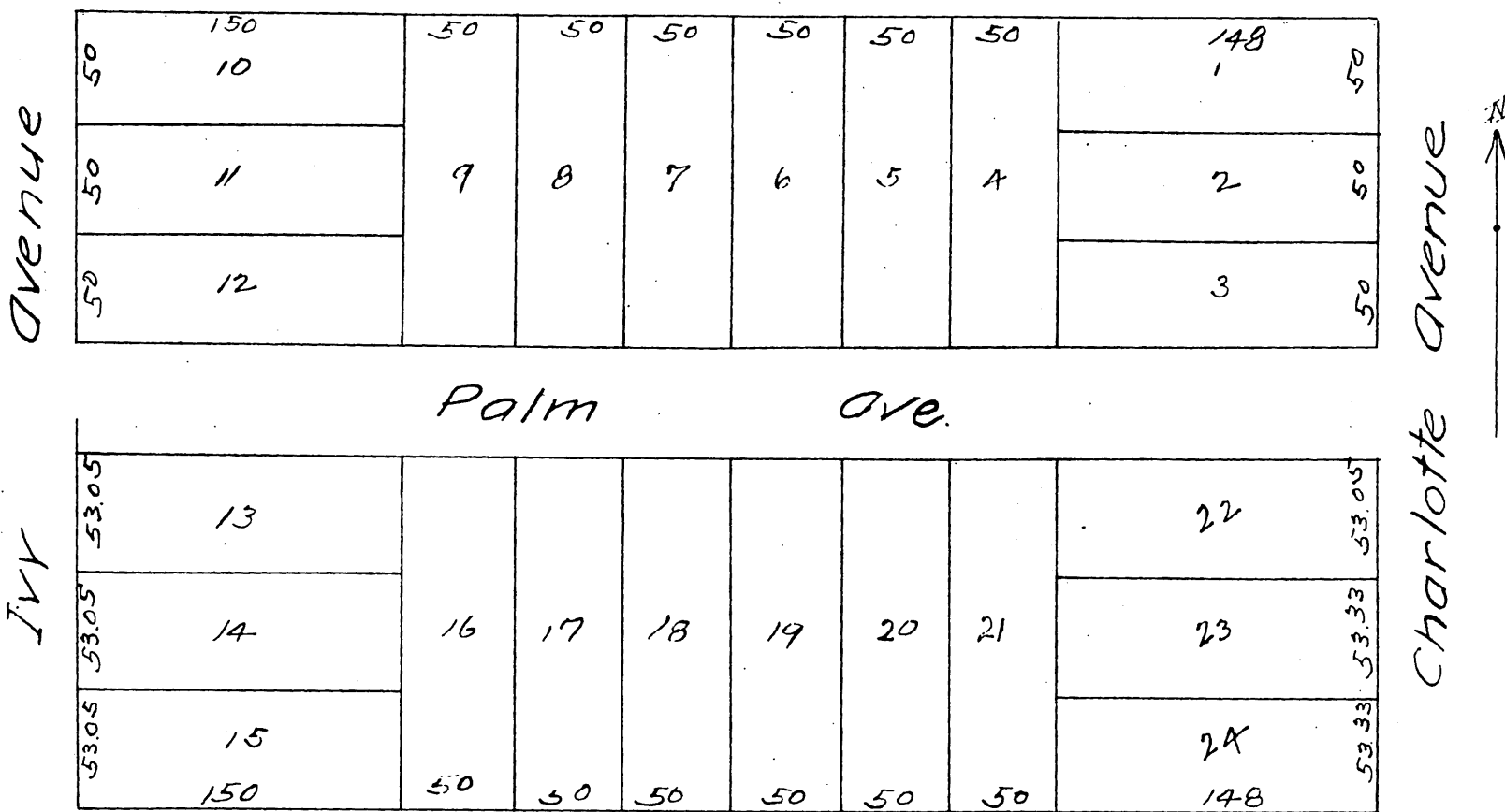


Los Angeles Cal Feby 29, 88
 I hereby certify that in reference to the "M, P, B, & C" Subdivision as recorded in book 15 Page 43 Miscellaneous records of Los Angeles County California.
 First: that Palm Avenue as shown is 60 ft in width.
 Second: that said Subdivision embraces the ^{whole} of lot "F" and the South 44 ft of lots "A, B" in block 2 Monrovia tract, as per map, Monrovia tract, recorded in book 9, Page 73 & 74 records as aforesaid.
 C. A. Campbell.



PLAT OF M-P B & C Subdivision.

Of Lot F Block 2 and parts of Lots A & B same Block
 Monrovia, Tract Rancho Santa Anita
 Los Angeles County Calif
 March 87



a full, true and correct copy of the original,
 (reduced to the scale of 80 feet to one inch)
 recorded March 25, 1887 at 50 min Past 9. a.m.
 at request of Buck and Campbell,
 Frank A. Gibson County Recorder.
 By Geo Bugbee Deputy.