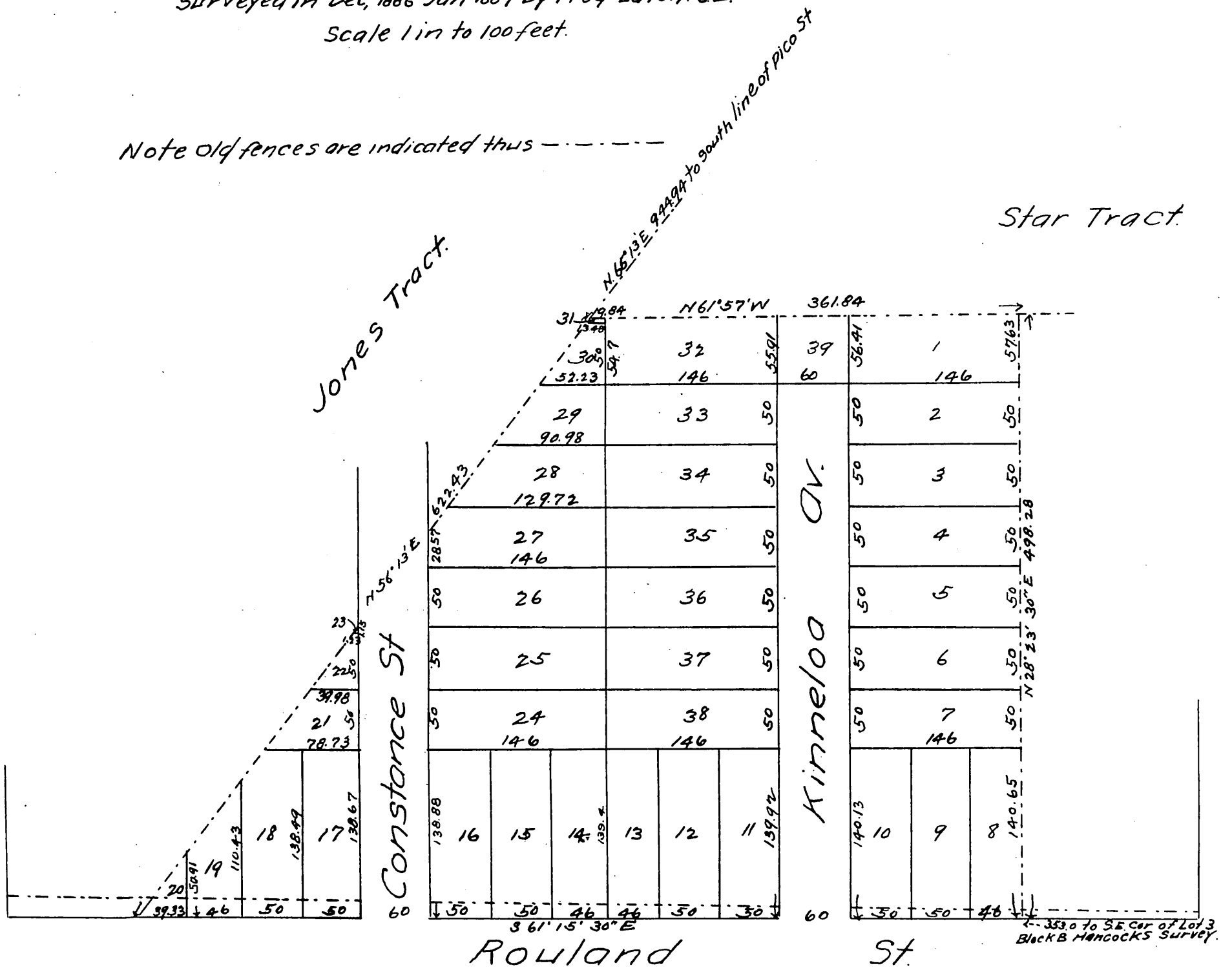


MAP
OF
Abbot and Margaret Tract
SITUATED IN LOS ANGELES CITY CALIFORNIA.
BEING A SUBDIVISION OF PART OF LOT 3, BLOCK B HANCOCK, SURVEY
SURVEYED IN DEC, 1886 JAN 1887 BY FRED EATON. C.E.
Scale 1 in to 100 feet.

Note old fences are indicated thus - - - - -

Star Tract



a full, true and correct copy of the original
recorded March 25, 1887, at 10 min past 3 P.M.
at request of T. E. Rowan

Frank A. Gibson county Recorder.
By Leo Bugbee Deputy.