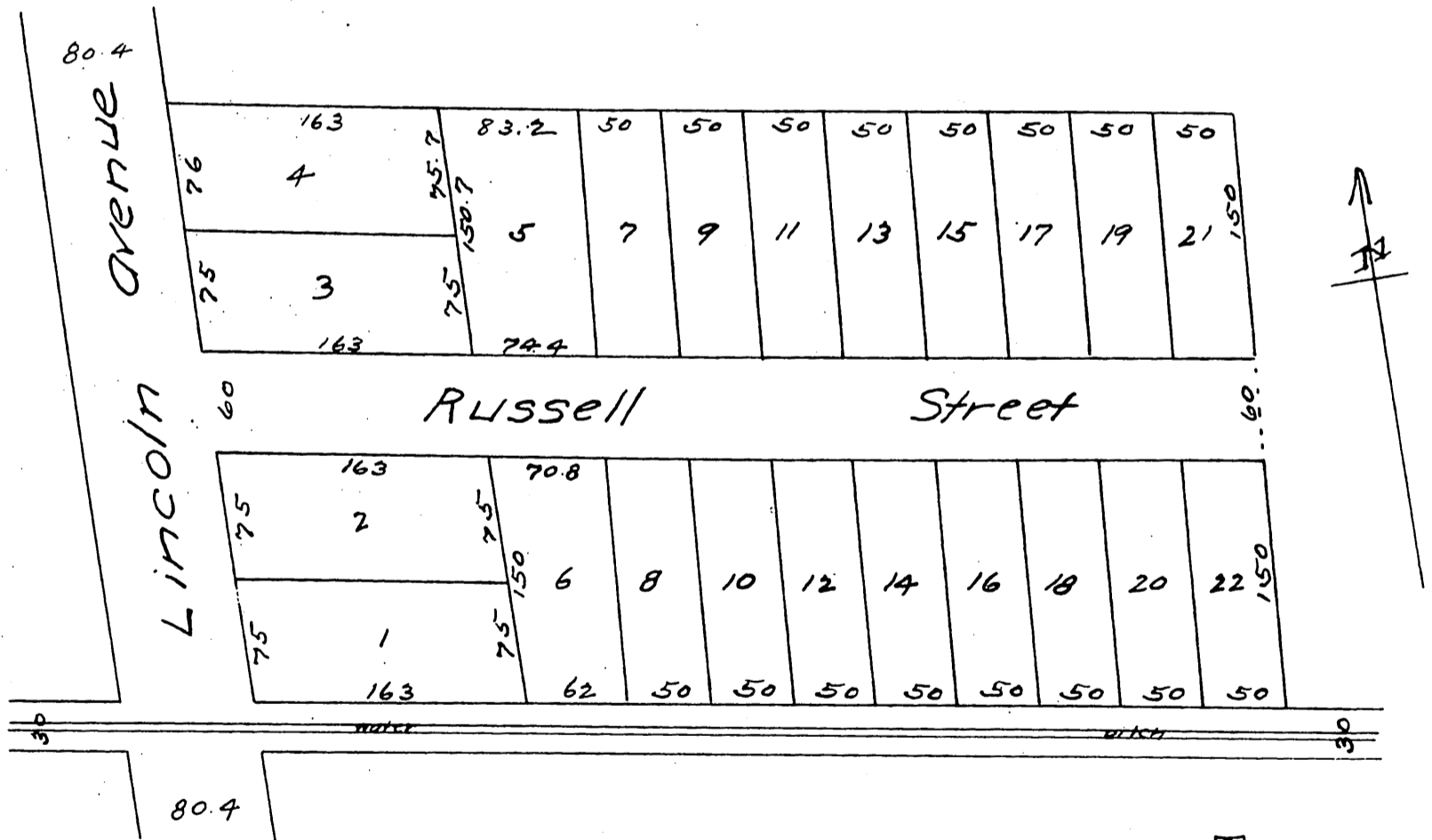


1545

MAP
 OF
 Brooks & Buttners
 Subdivision of Lot 3 of B.O. Clark's Subdivision of
 Lot 20 B1K 9 San Pasqual Tract.
 Pasadena Cal.
 Surveyed March 1887 by Riggins & Phillips Surveyors.
 Scale 60 ft to one inch.



A full, true and correct copy of the original,
 (reduced to the scale of 100 feet to one inch)
 recorded March 26, 1887 at 38 min past 10 a.m.
 at request of C. E. Brooks.
 Frank A. Gibson County Recorder
 By Geo. Rungbee Deputy.