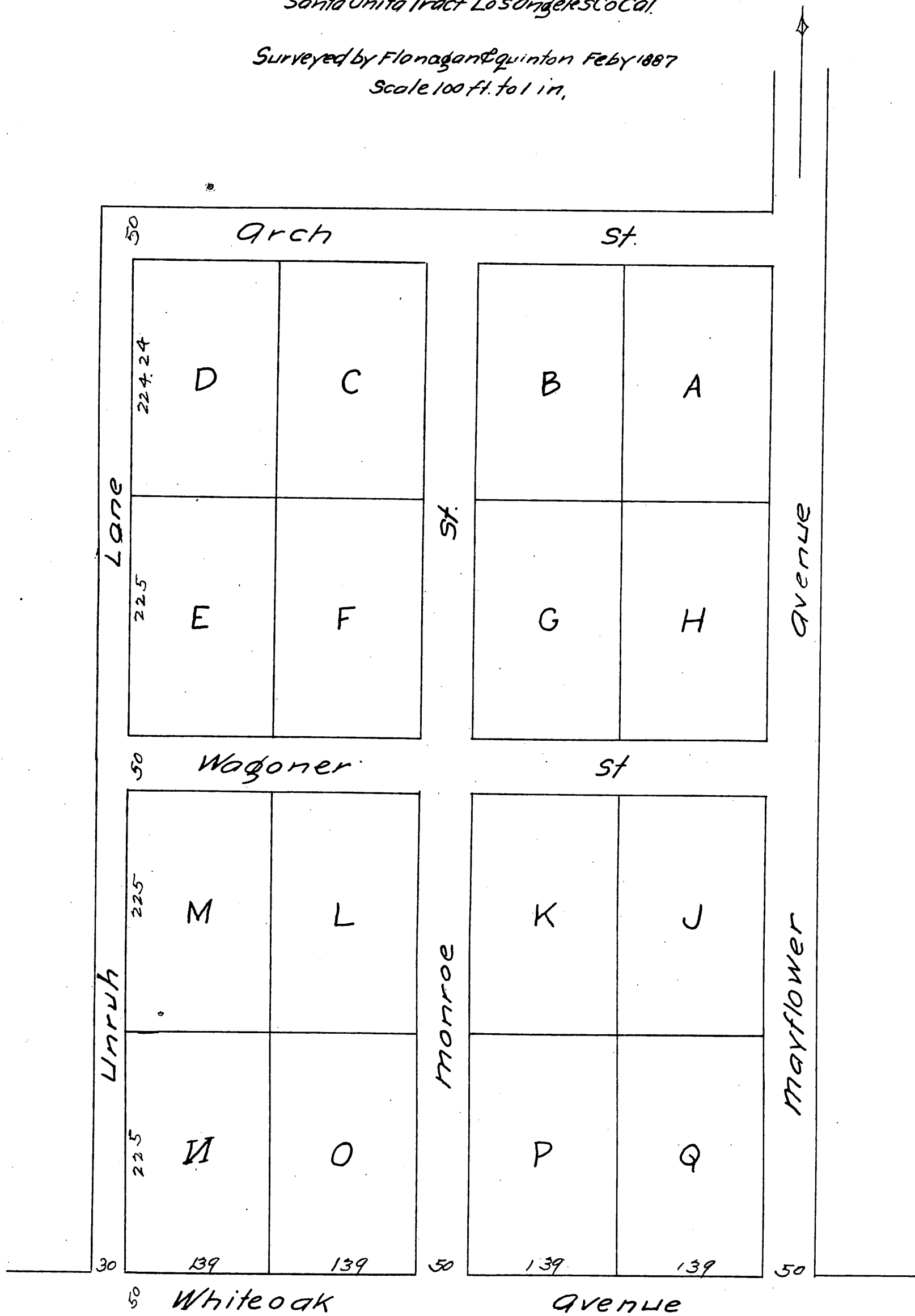


# MAP OF Mosher Addition

to Monrovia Tract being subdivision of Block 64  
Santa Anita Tract Los Angeles Co Cal.

Surveyed by Flanagan & Quinton Feby 1887  
Scale 100 ft. to 1 in.



a full, true and correct copy of the original  
Recorded March 26, 1887 at 21 min Past 3 P.M.  
at request of L. E. Mosher.

Frank A. Gibson County Recorder.  
By Geo Bugbee Deputy.