

# In Orange County Lyon's Addition

— TO —  
Santa Ana Cal.

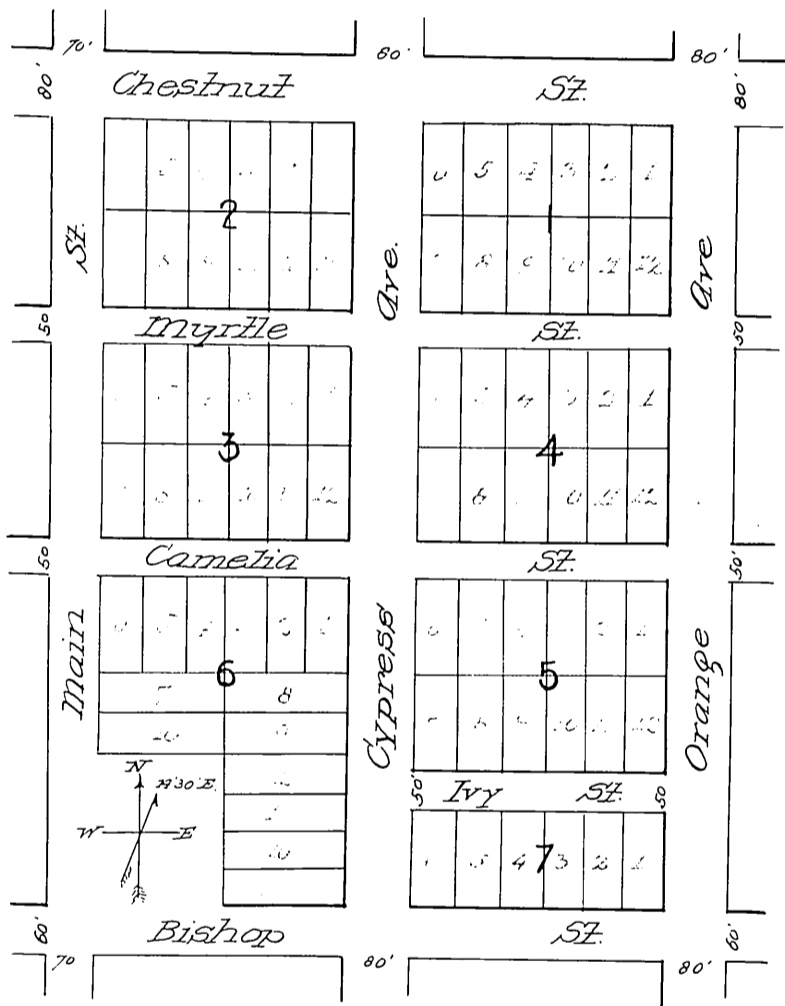
Surveyed by H. F. Stafford, Surveyor, December 1886.

### Notes

All lots in Blocks 1, 2, 3, 4, 5 are 53 x 125 feet. Lots 1, 2, 3, 4, 5, 6 in Block 6 are 53 x 125 feet. Lots 7, 8, 9, 10, 12, 13, 16, 17 in "Block 6" are 49.42 x 159 feet. All lots in "Block 7" are 53 x 118.34 feet.

### Description

Commencing at a point on the range line S. 1645 chains from S.W. corner of Sec. 18, T. 5S. R. 9 West and is the land deeded by Harry J. Blee to Geo. B. Lyon. March 22, 1887.



Recorded March 28<sup>th</sup> 1887, at 8<sup>25</sup> A.M.  
at request of W. S. Bartlett.