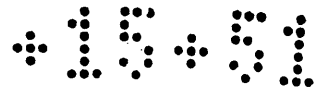


MAP



OF G Weingarth's Subdivision

of S.E. one half of 30 acre tract marked "Lippincott"
in Division B of Lands of San Gabriel Orange
Grove Association as per map recorded in

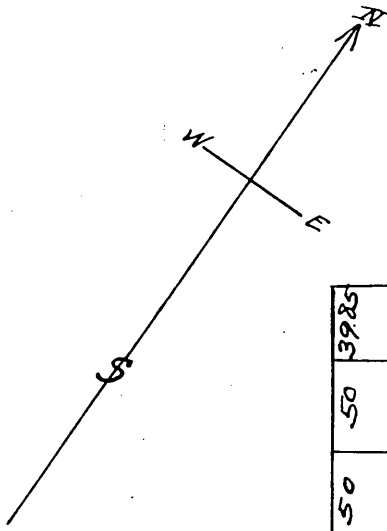
BK 2 p 556 Misc. Rec L.A. Co.

in the City of

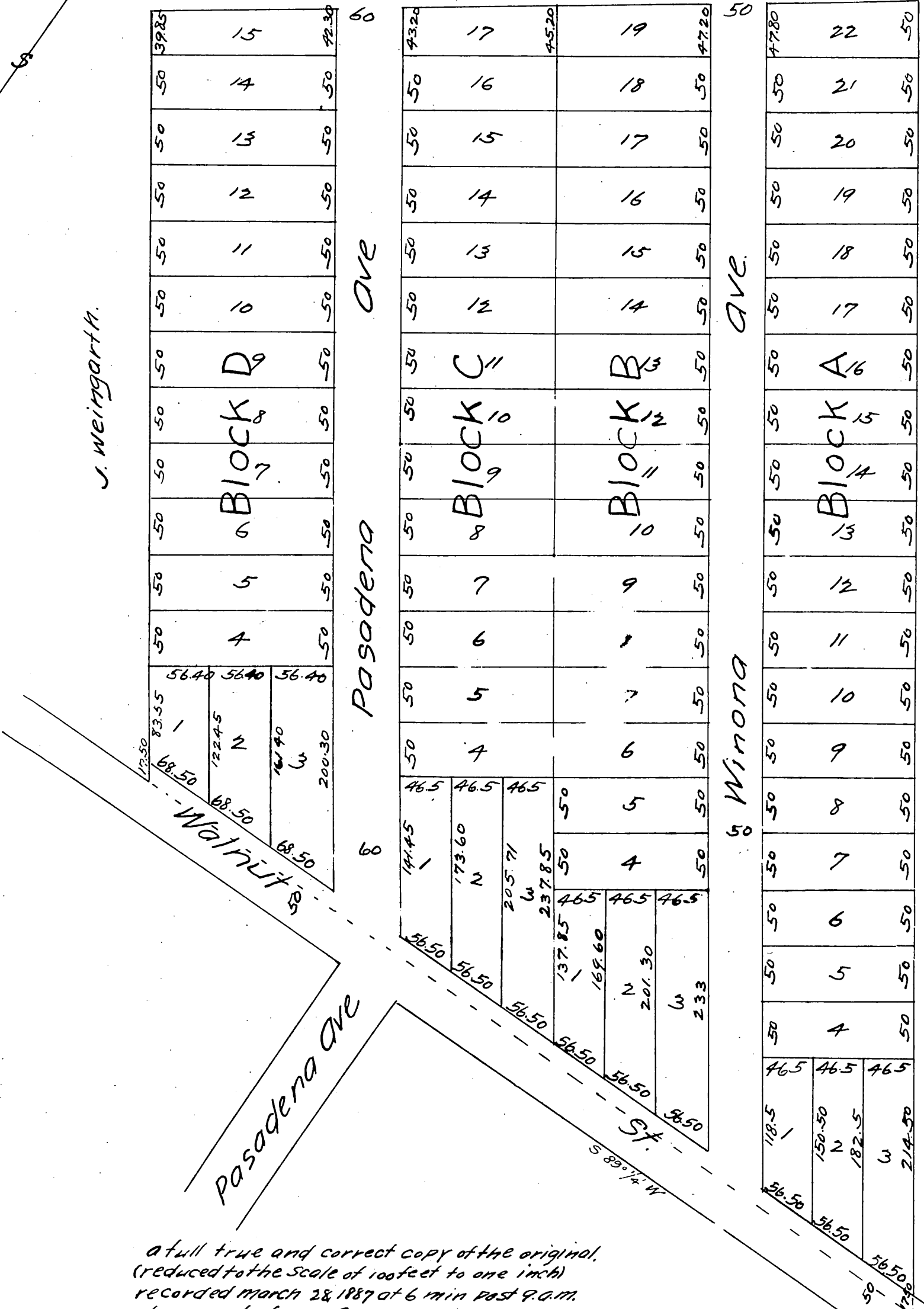
Pasadena Los Angeles Co. California.

Surveyed Mar. 1887 by J. Norton C.E.

Scale 80 ft = 1 in.



J. Weingarth.



a full true and correct copy of the original.
(reduced to the scale of 100 feet to one inch)
recorded March 28, 1889 at 6 min past 9 a.m.
at request of Mrs. G. Weingarth.

Frank A. Libson, County Recorder.
By Geo. Bugbee, Deputy.

O. Bristol.

E. Turner.