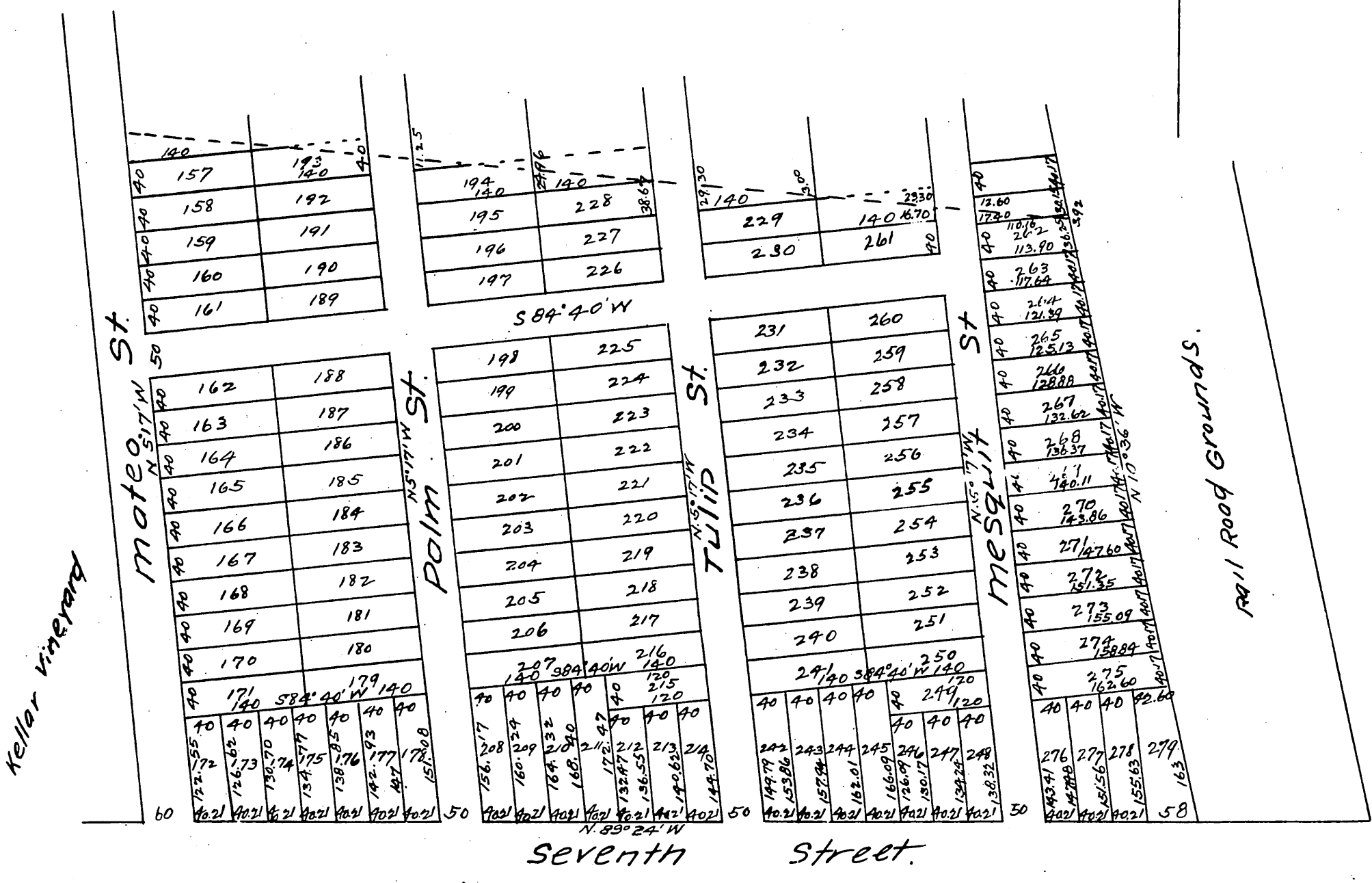


MAP

OF
Wingert Tract
 Subdivided March 1887 by L. Friel CE.
 Request M. L. WICKS
 Scale 100 ft = 1 inch.



A full, true and correct copy of the original
 (reduced to the scale of 150 feet to one inch)
 recorded March 29, 1887 at 53 min past 9 a.m.
 at request of M. L. WICKS.
 Frank A. Gibson County Recorder.
 By Geo Bugbee DEPUTY.