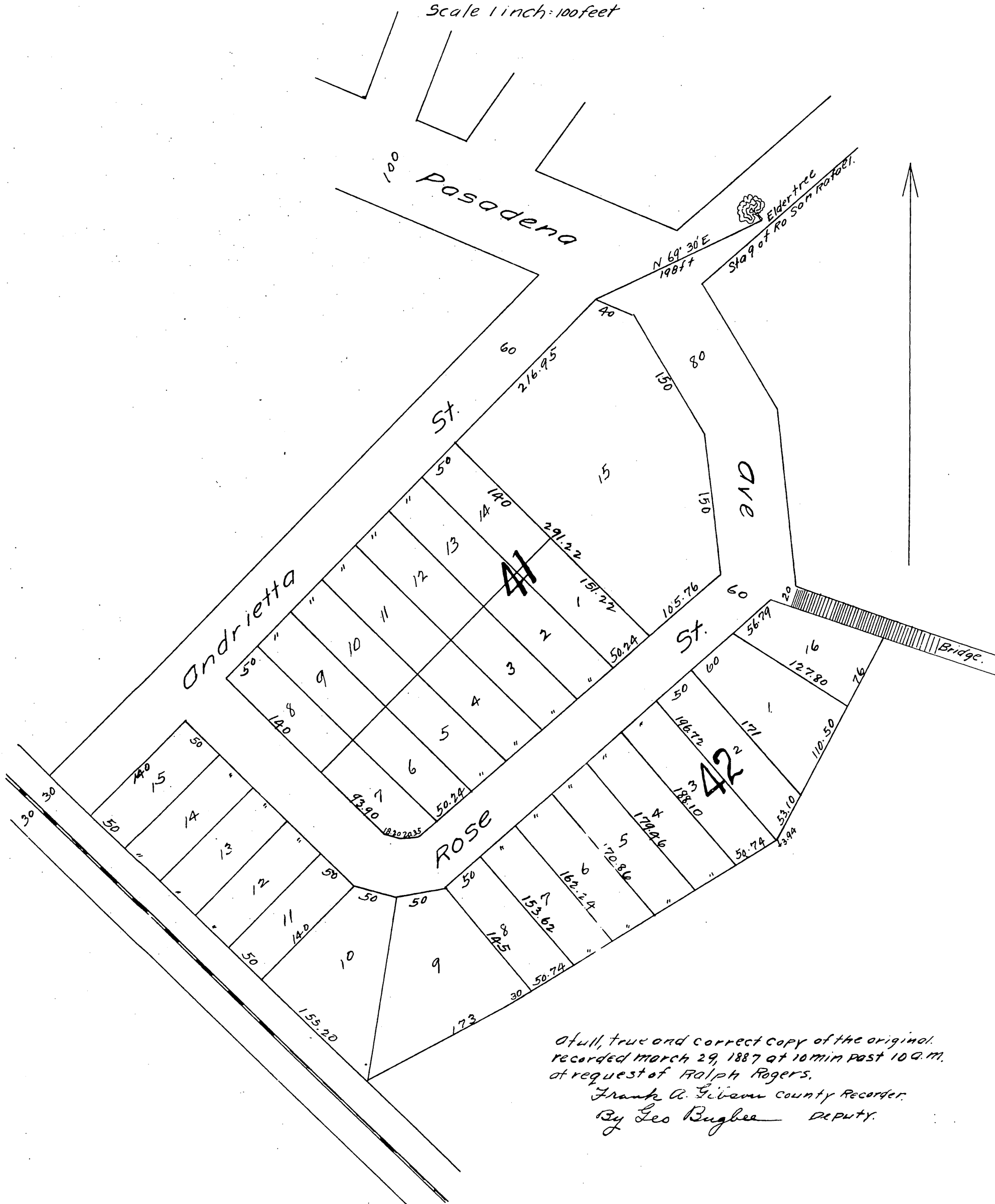


MAP OF Ralph Rogers Subdivision

of Block 41 in Garvanza addition no 1

Surveyed Dec 1886 by

Scale 1 inch = 100 feet



A full, true and correct copy of the original.
 recorded March 29, 1887 at 10 min past 10 A.M.
 at request of Ralph Rogers.
 Frank A. Givens County Recorder.
 By Geo Bugbee DEPUTY.