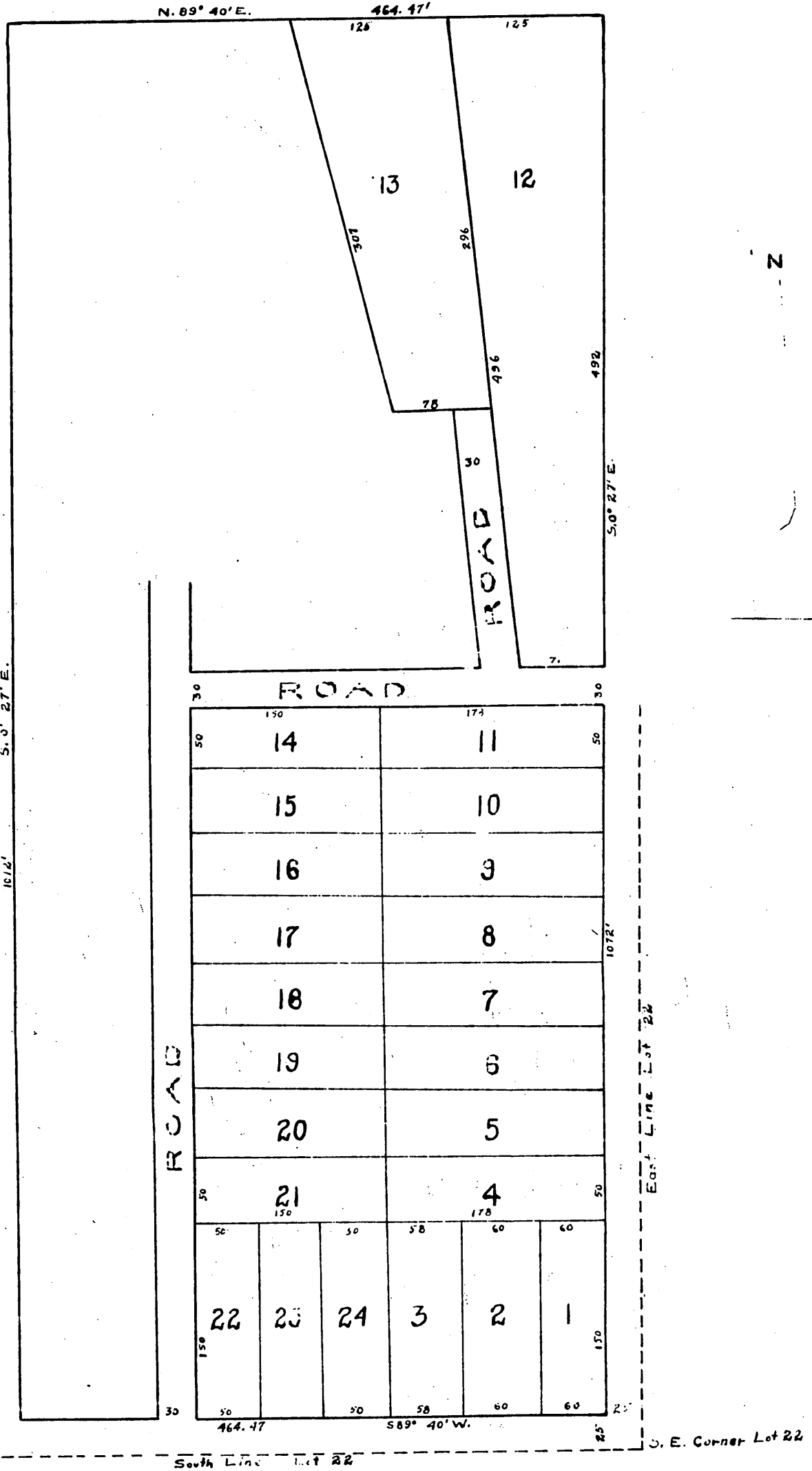


# BLUMER TRACT

Being a subdivision of the South East portion of lot  
22 Sierra Madre Tract Book 4 Page 502 M.R.  
L.A. Co. Calif.  
Surveyed by Gervaise Forecell C.E.

Scale 100 ft. to 1 inch



Recorded Mar. 29, 1887 at 3:24 P.M.  
at request of H.T. Lee