

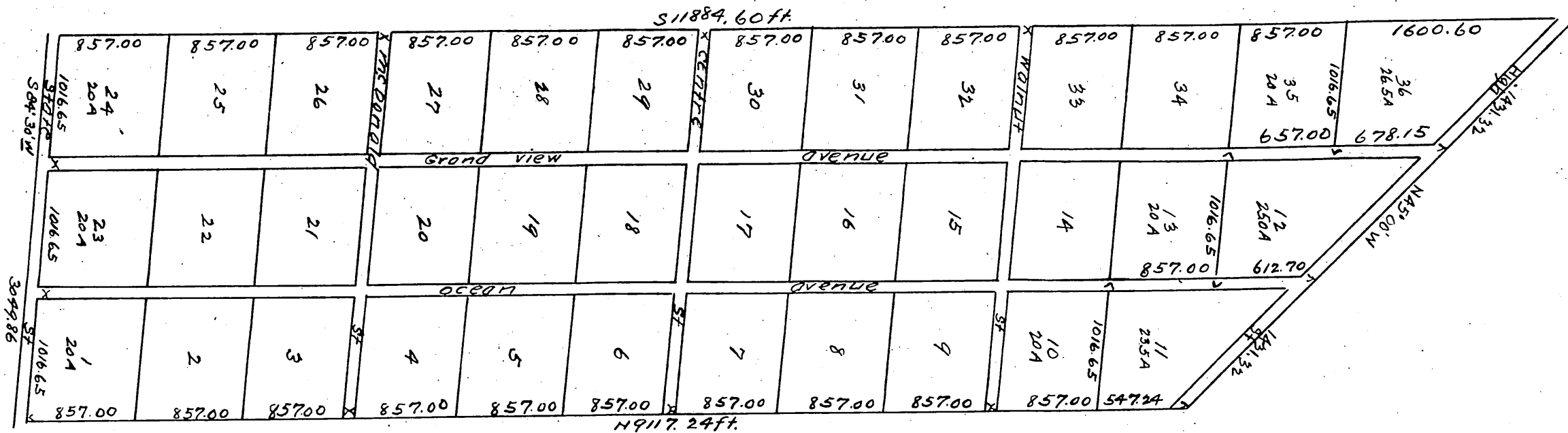
# Meadow Park Tract

The subdivision of Lot C of the Palos Verdes Rancho

Los Angeles Co Cal.

as surveyed 1886 by E. G. Jones C. E.

Scale 100 feet to one inch.



A full, true and correct copy of the original  
 recorded March 31, 1887 at 48 min past 11 A.M.  
 at request of E. N. McDonald

Frank A. Gibson County Recorder.  
 By Geo. Bugbee DEPUTY.

