

1501

MAP

OF THE

Hayes Osterhout and Farris.

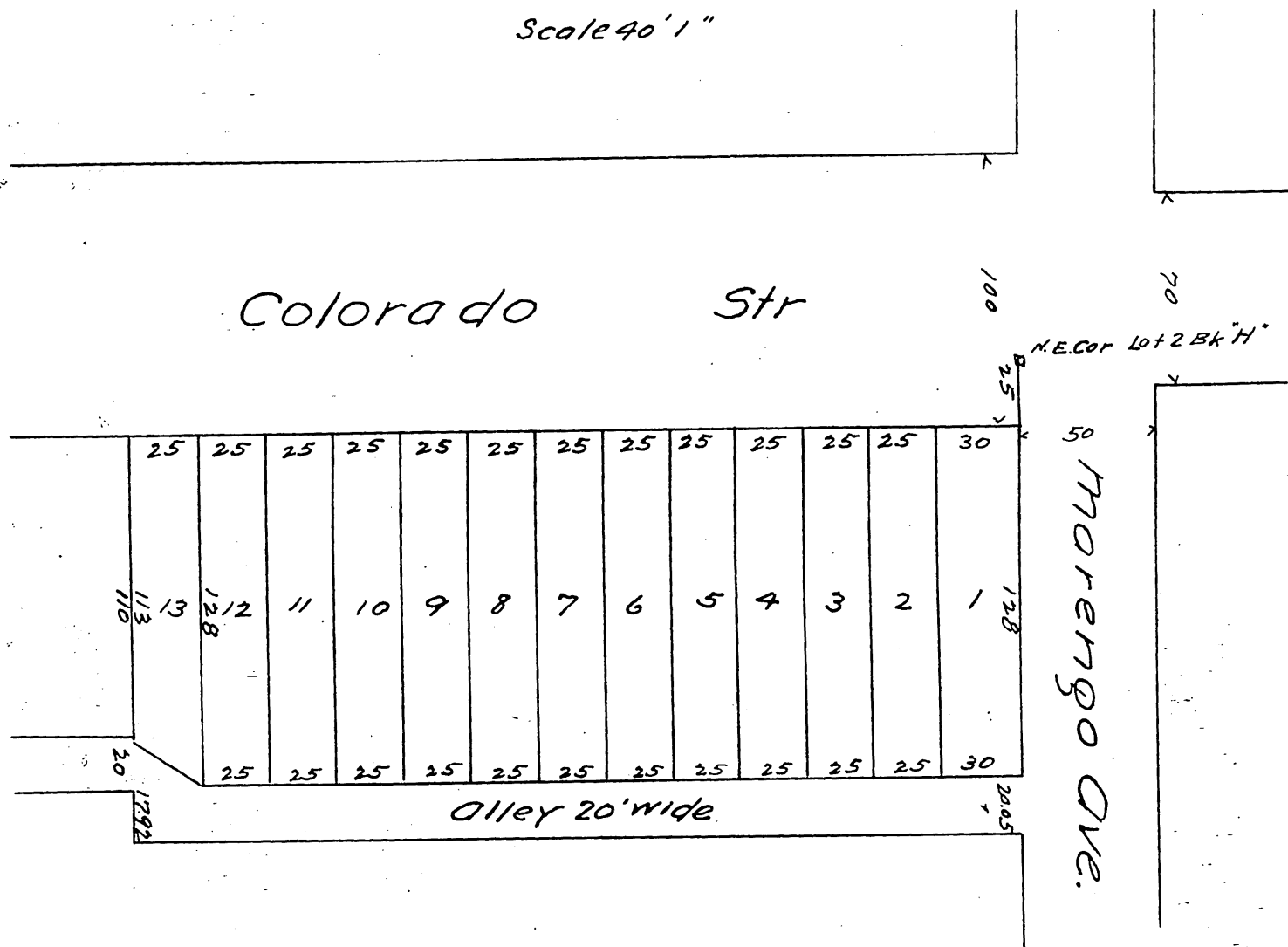
Subdivision of a portion of Lot 2 Blk H.

San Pasqual Tract of the lands of the
Lake Vineyard Land and Water Association.

Pasadena Col.

Surveyed Mch 1887 J.M. Willard C.E.

Scale 40' 1"



A full, true and correct copy of the original
(reduced to the scale of 60 feet to one inch)
recorded April, 1, 1887 at 22 min past 2 P.M.
at request of E. L. Farris.

Frank A. Gibson County Recorder.
By Geo Bugbee DEPUTY.