

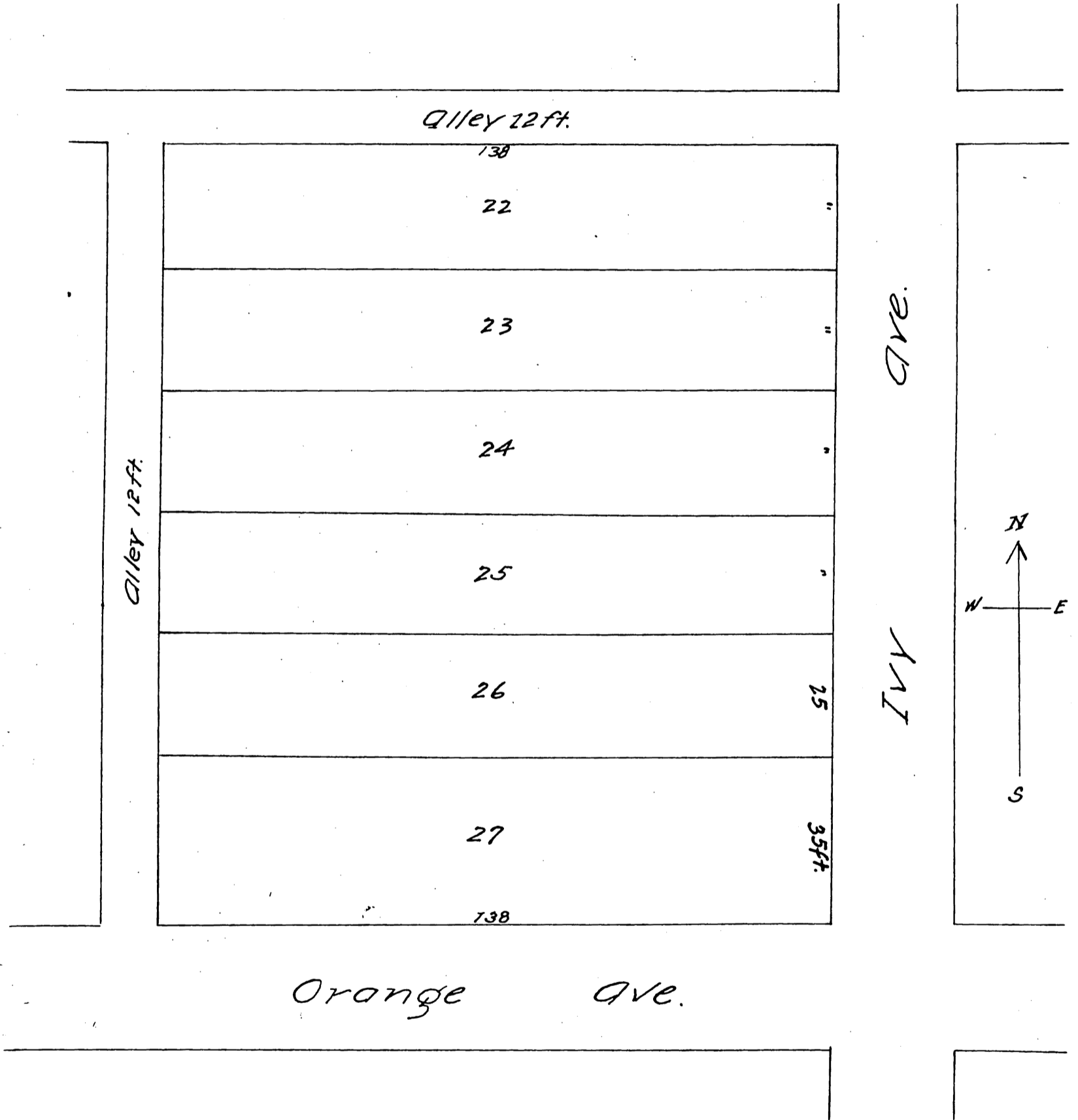
MAP OF Dr Stewart's Subdivision

of Lots no 22, 23 & 24 Block "K" Town of Monrovia

Los Angeles Co. Cal.

Surveyed by J. S. McDonald C.E.

Scale 1 inch equal 25 ft.



A full, true and correct copy of the original
recorded April 2, 1887 at 9 A.M. at request
of Dr C. H Stewart.

Frank A. Libson County Recorder
By Geo. Bugbee Deputy.