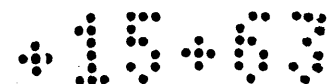
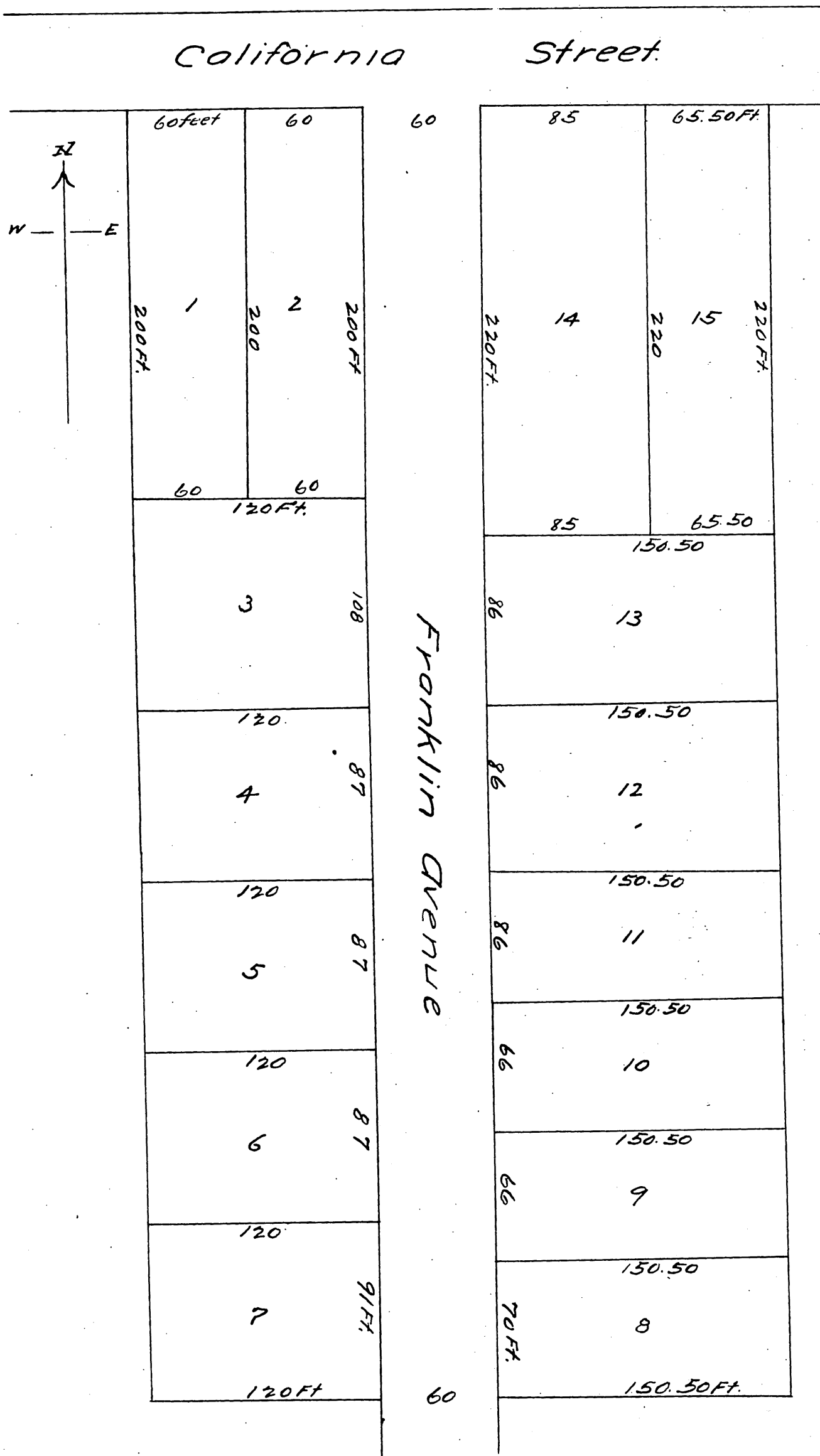


Sarah L. Ecclestone's
 Subdivision of East half of Lot 1, Block 9
 San Pasqual Tract.
 City of Pasadena Cal.



Sep 25th 1886 Wm W. Mills Surveyor.



a full, true and correct copy of the original.
 recorded April 2, 1887 at 30 min Past 1 P.M.
 at request of Sarah L. Ecclestone.
 Frank A. Gibson county Recorder.
 By Geo. Bugbe Deputy.