

# MAP of Boettcher & Forsters

Subdivision of Lots 17 & 18 of the

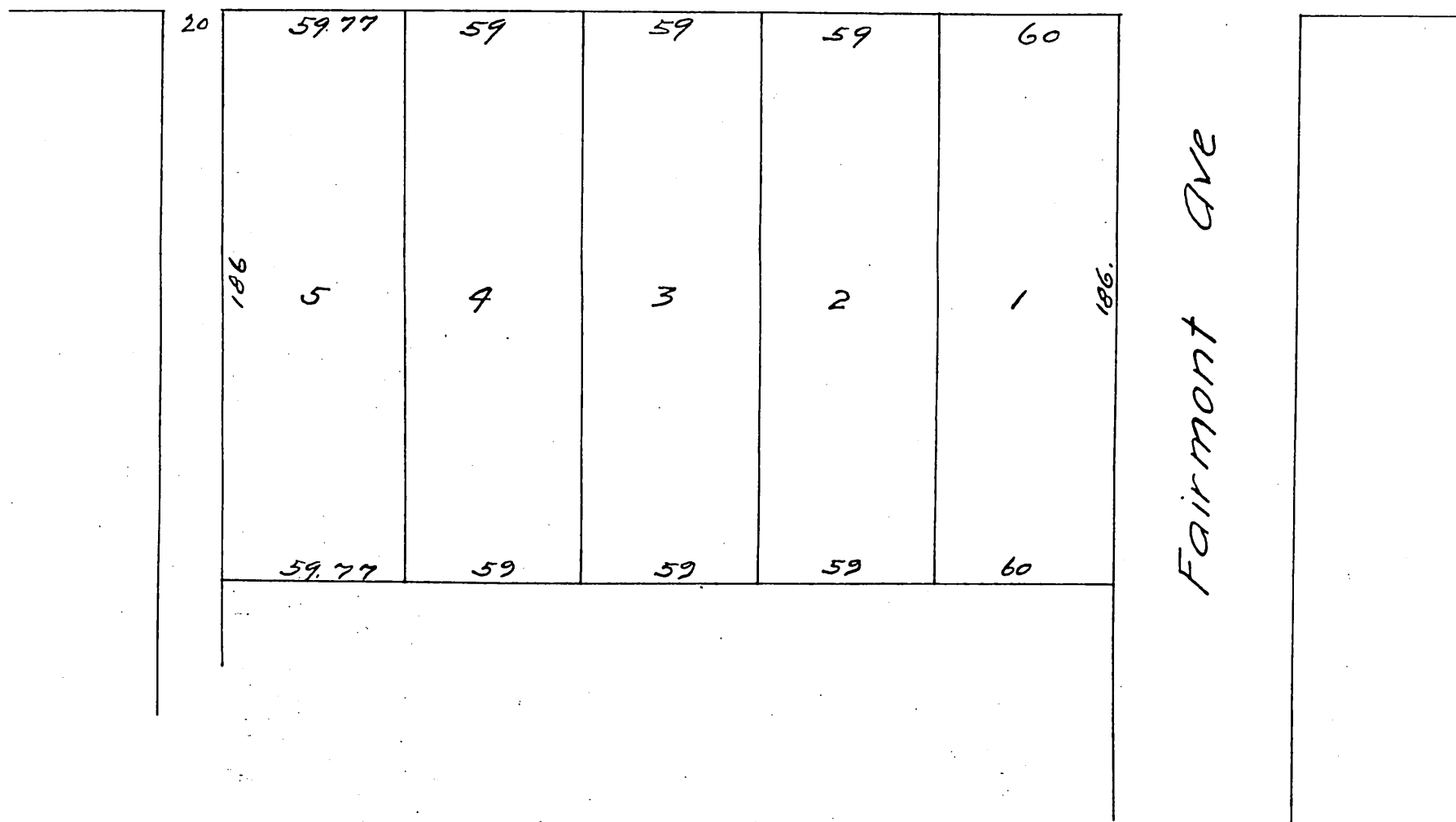
H. H. Markham Tract.

Pasadena L. A. Co. Cal.

Surveyed Apr. 1887 by E. T. Wright.

Scale 50 ft to one inch.

Congress St.



A full, true and correct copy of the original.  
recorded April 4, 1887 at 55 min past 9 O. M.  
at request of R. Boettcher

Frank A. Gibson County Recorder  
By Geo. Bugbee Deputy.