

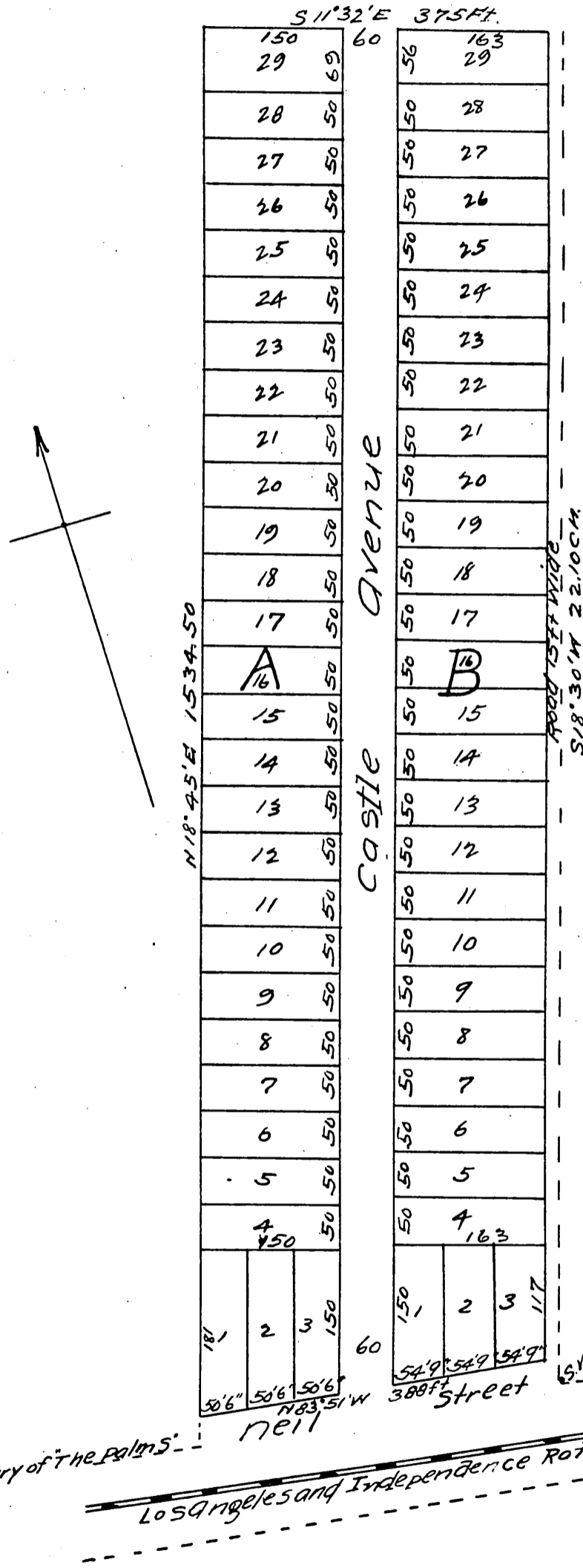
MAP

OF

The Palm City Tract.

Los Angeles County

Scale 100 feet to one inch.



7.50 ch to the West boundary of The Palms

at full, true and correct copy of the original.
 Reduced to the scale of 150 feet to one inch,
 recorded April 5, 1887 at 4 o min past 11 A.M
 at request of A.G. Hinckley.
 Frank A. Gibson County Recorder
 By Leo Bugbee Deputy.