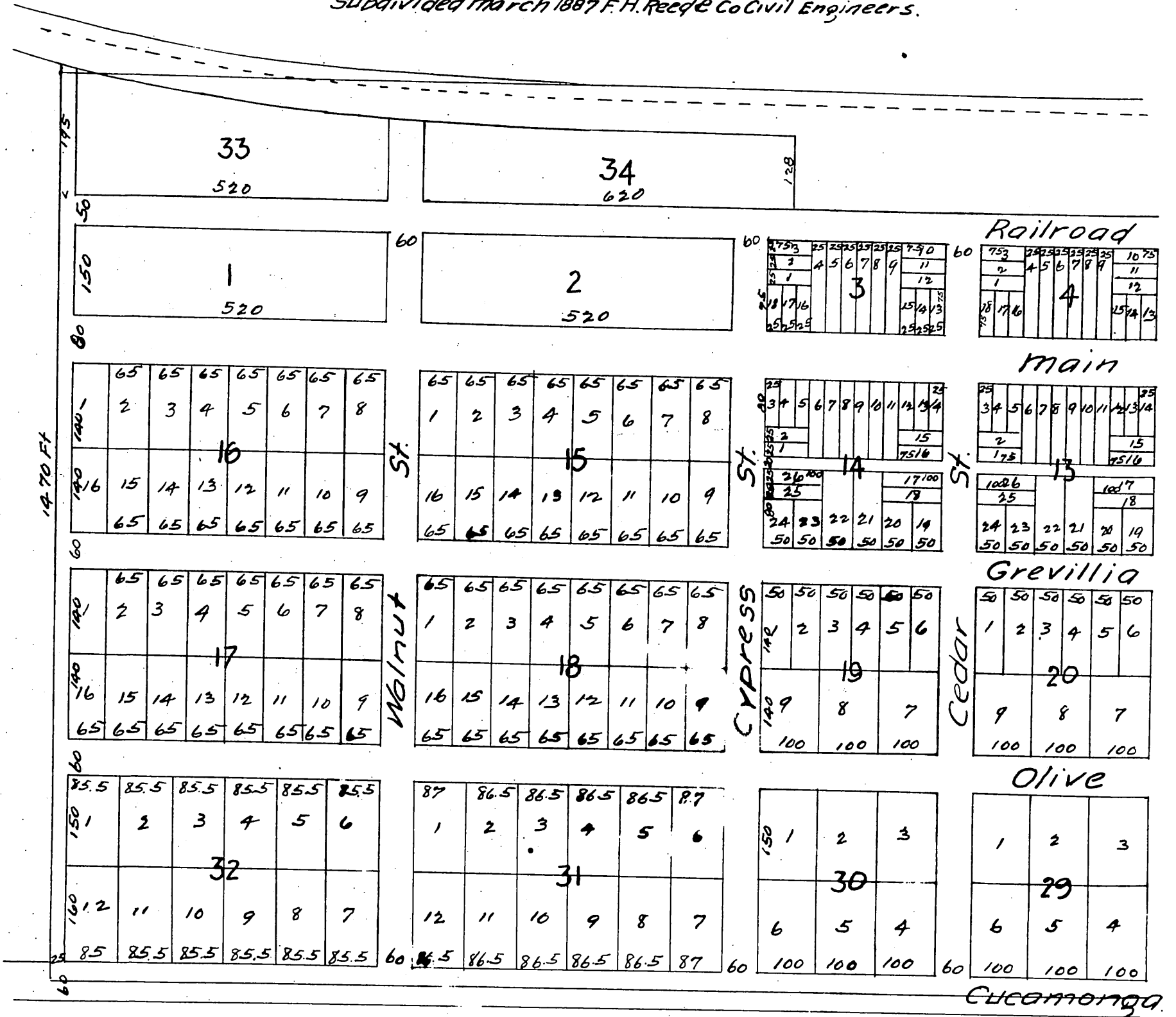
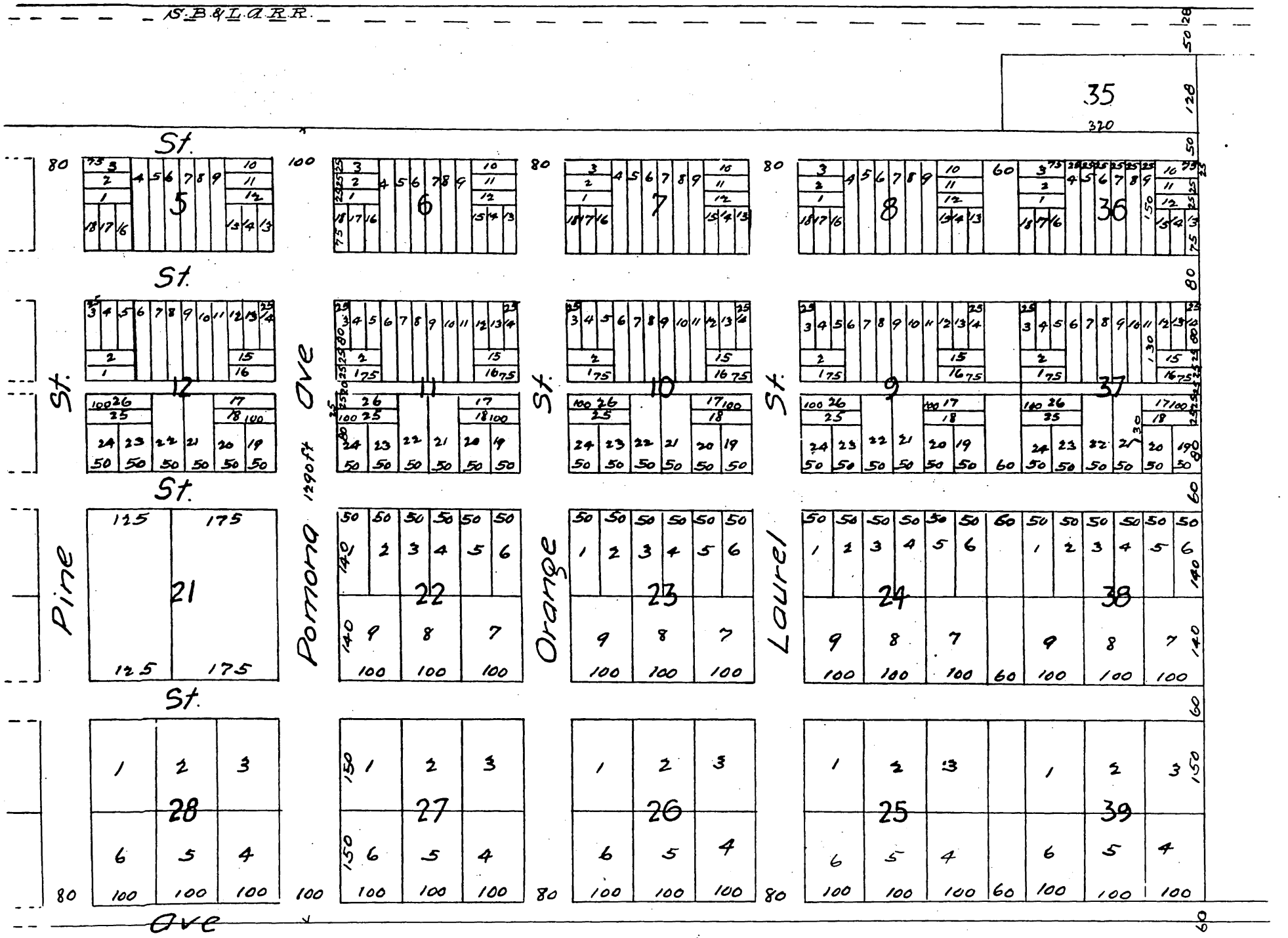
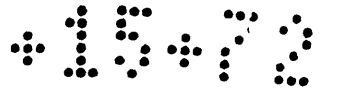


Official  
**PLAT**  
 of the Townsite of  
**Palomares**  
 Los Angeles County Cal.

Being a subdivision by A.R. Meserve Lizzie H. Meserve.  
 E.O. Meserve and E.D. Rice of lots 9 and 10 and a portion  
 of the homestead of Lizzie H. Meserve in the Loop and  
 Meserve Tract of the Rancho San Jose  
 Subdivided March 1887 F.H. Reed & Co Civil Engineers.





a full, true and correct copy of the original  
 (reduced to the scale of 200 feet to one inch)  
 recorded April 7, 1887 at 30 min past 8 A.M.  
 at request of E. A. Meserve  
 Frank A. Gibson County Recorder  
 By Geo. Bugher Deputy.