

# MAP OF THE J. N. Sears Subdivision

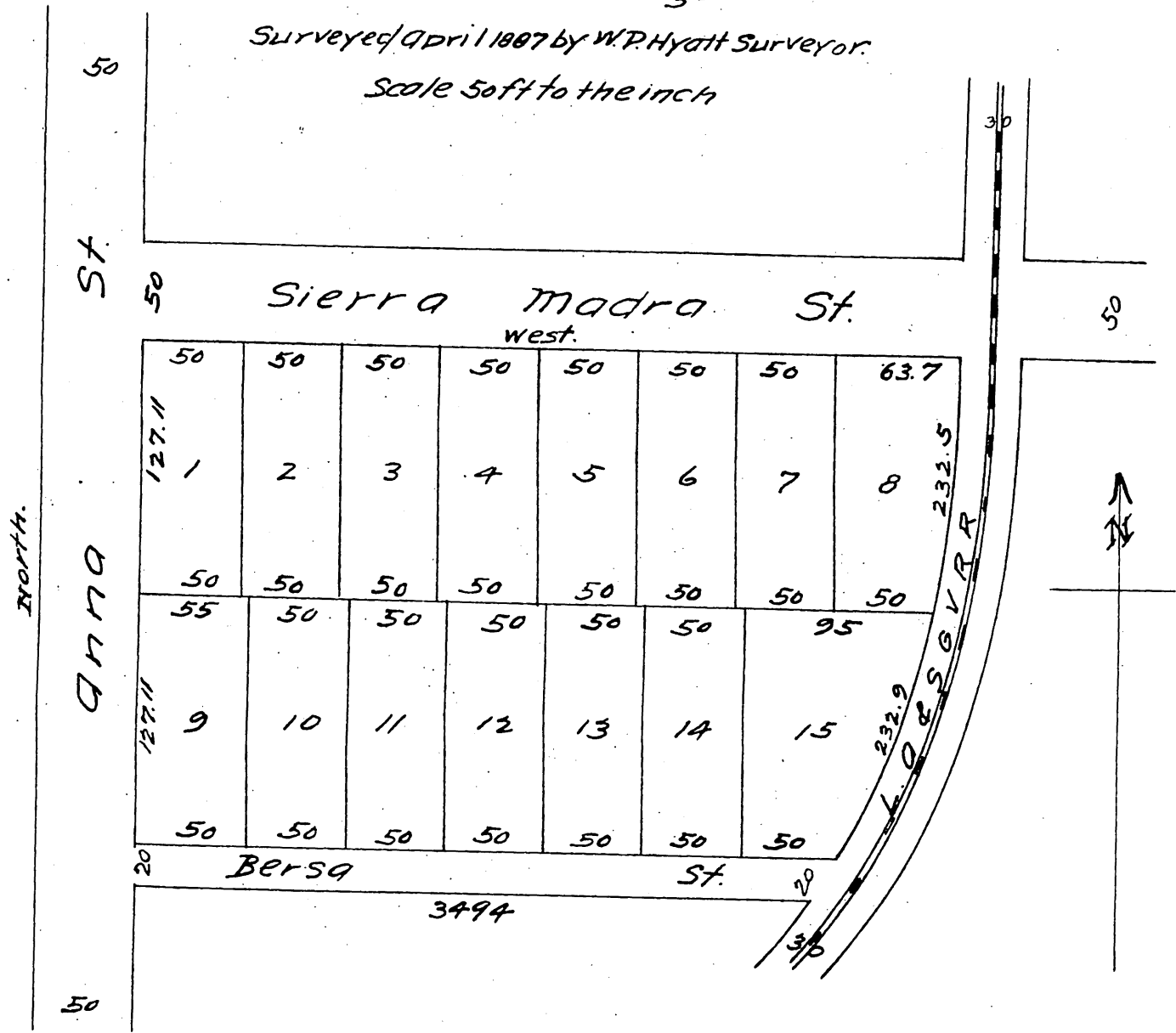
of Lot 2 Blk 4 of L. J. Roses Subdivision of

## Lamanda Park

Recorded in Book 7 Page 38

Surveyed April 1 1887 by W. P. Hyatt Surveyor.

Scale 50 ft to the inch



A full, true and correct copy of the original.  
(reduced to the scale of 80 feet to one inch)  
recorded April 7, 1887 at 27 min past 10 A.M.  
at request of J. N. Sears.

Frank A. Libson County Recorder.  
By Geo Bugbe Deputy.