

1577

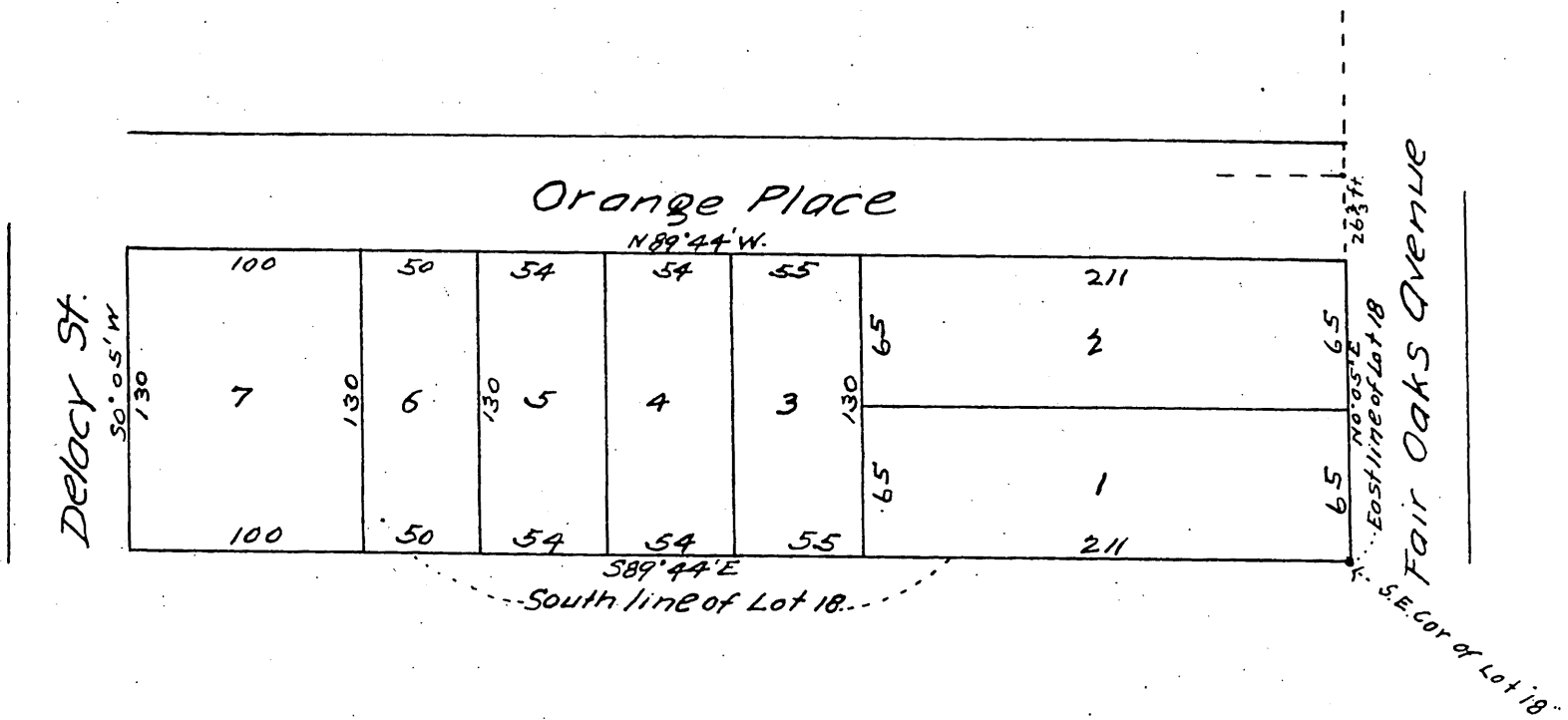
PLAT  
 OF  
 Nichols Subdivision  
 Pasadena, Cal.

Subdivision of part of Lot 18 Washburns Subdivision.

Lot 8 Division C of Berry and Elliotts Tract

Surveyed June 1886 by J. M. Willard.

Scale 50 ft = 1 inch



A full, true and correct copy of the original.  
 (reduced to the scale of 80 feet to one inch)  
 recorded April 7, 1887 at 10 min past 2 P.M.  
 at request of Theron Nichols

Frank A. Gibern County Recorder.  
 By Geo Bugbee Deputy.