

MAP

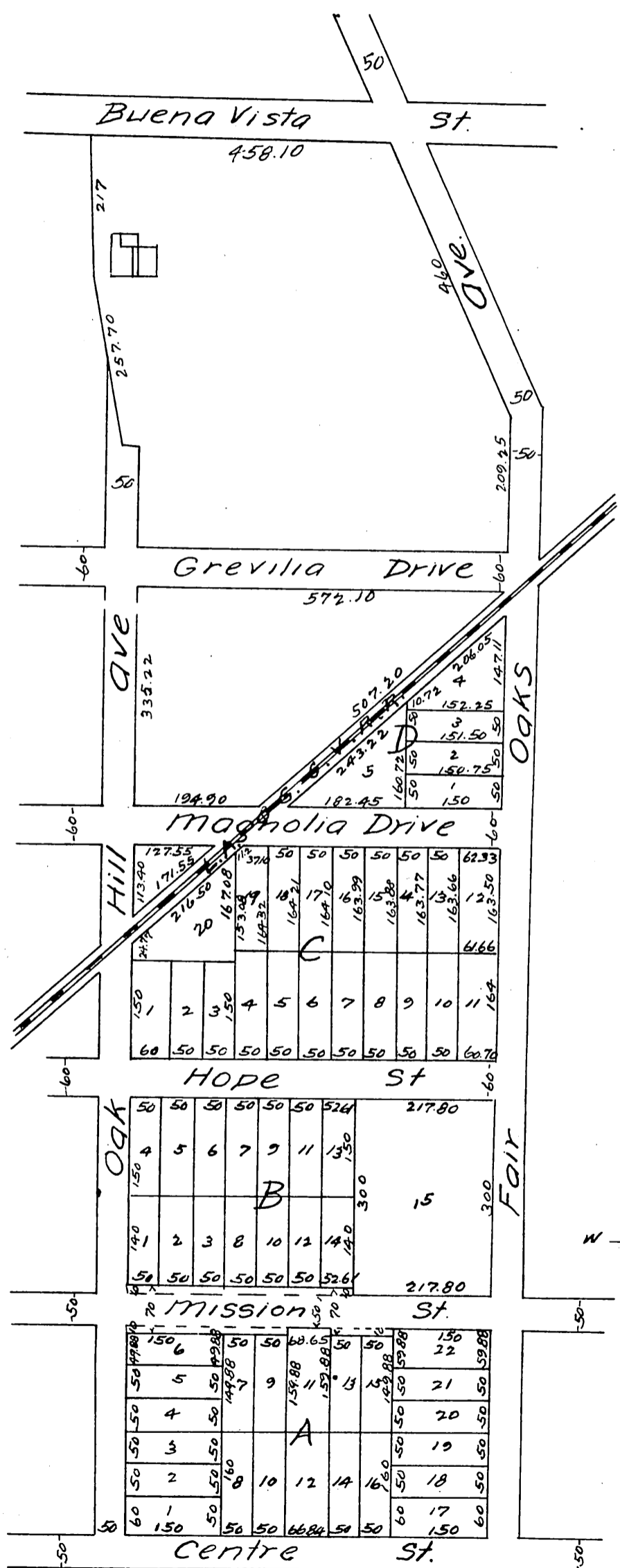
OF

Raab's Subdivision

South Pasadena Los Angeles Co. California.

Being a part of the Rancho San Pascual,
and a correction of a former survey by Jones & Willard.
Surveyed Mar 1887 by J. Norton C. E.

Scale 100 ft = 1 inch
50 100 150 200



a full, true and correct copy of the original
(reduced to the scale of 200 feet to one inch)
recorded April 8, 1887, at 26 min past 12 m.
at request of D. Raab,
Frank A. Gibson County Recorder.
By Geo. Bugbee Deputy.