

# PLAT

Showing F.D. Lanterman's Subdivision of the

## Maudsley Tract.

Being the property conveyed to Austin C. Shafer and Frank D. Lanterman

by L. J. Garnsey and T. W. T. Richards by deed recorded

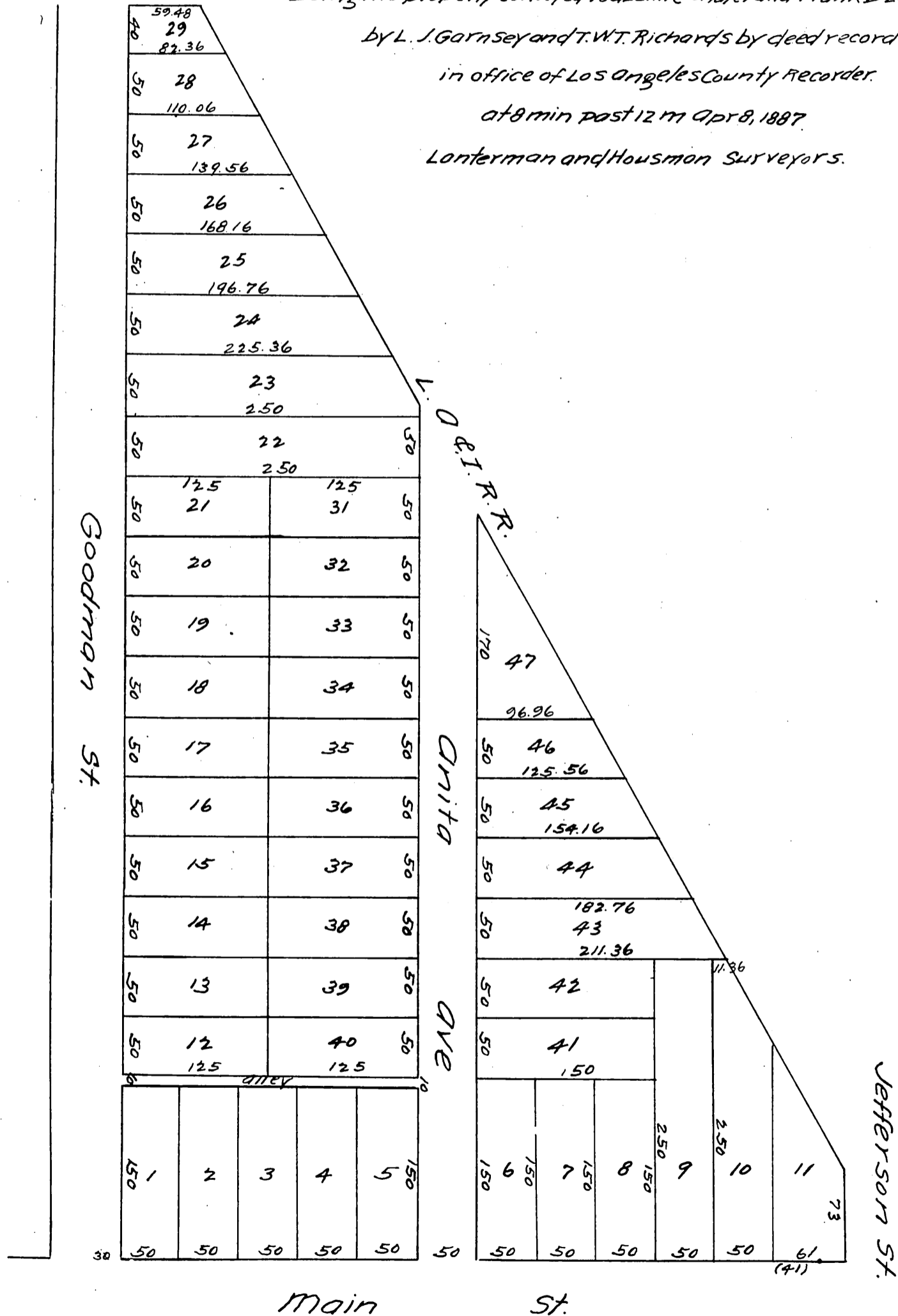
in office of Los Angeles County Recorder

at 8 min past 12 m Apr 8, 1887

Lanterman and Housman Surveyors.



Los Angeles St.



Main St.

a full, true and correct copy of the original.  
recorded April 8, 1887, at 53 min past 1 P.M.  
at request of Frank D. Lanterman.

Frank A. Liborn county Recorder.

By Geo Bugbee Deputy.