

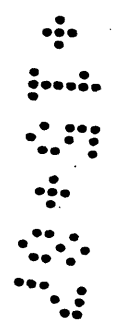
State of California  
 County of Los Angeles.

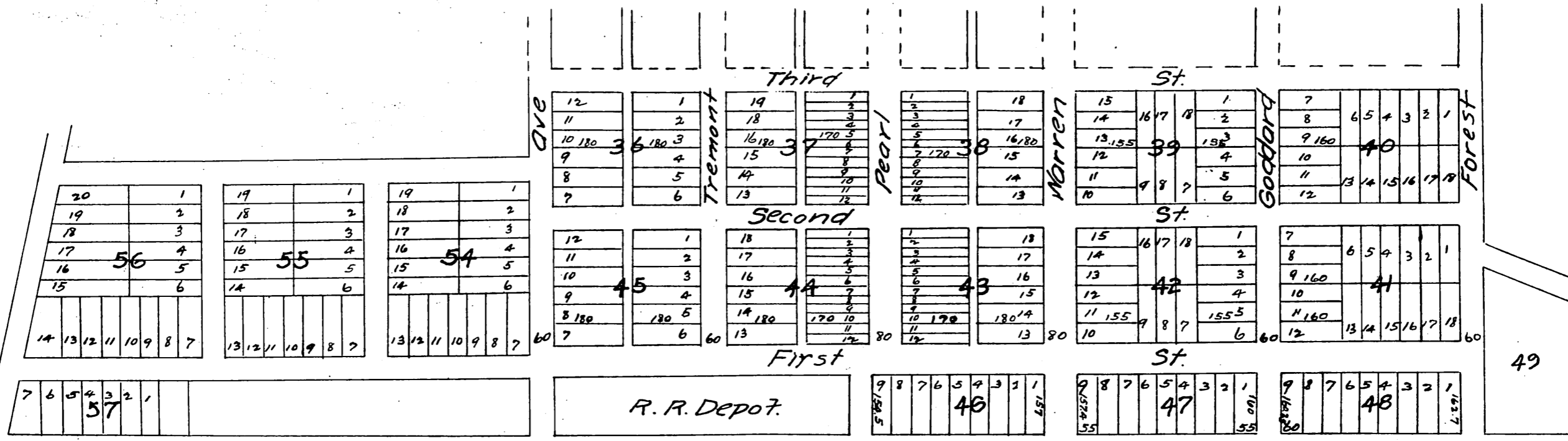
J.P.F. Kuhlmann being first duly sworn says that he surveyed the town of Claremont according to the map thereon recorded in Book No. 15 P. 87-88 of Miscellaneous Records of Los Angeles County; that the North east corner of the Township is the center of the North west quarter of Section 10 T. 1 S. R. 8 W. S. 8. N. and the South west corner is 3901.3 feet West of a point in the boundary line bet Los Angeles and San Bernardino Counties 117.9 feet S. 20° W of the monument on the North east corner of the Rancho San Jase in the County line of Los Angeles and San Bernardino Counties and further he says that he

J.P.F. Kuhlmann.

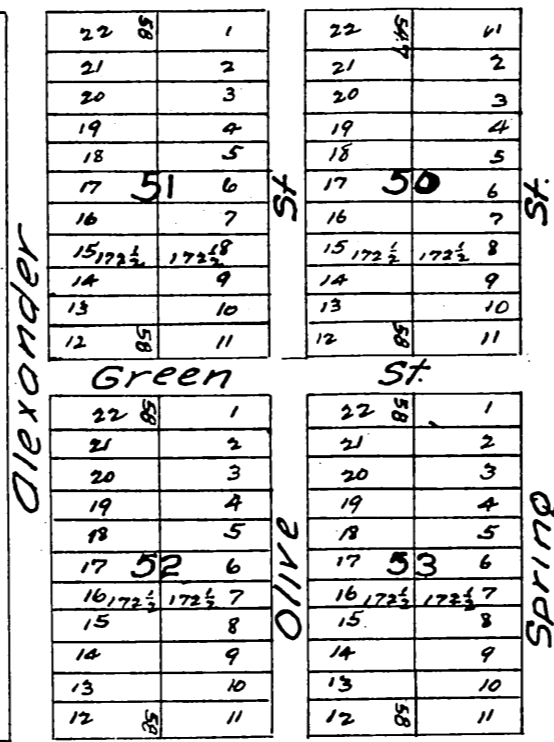


MAP  
 OF  
 Claremont  
 Los Angeles Co. Cal.  
 1887  
 Surveyed by J.P.F. Kuhlmann C.E.  
 Scale 300ft to 1 in.





A full, true and correct copy of the original,  
 recorded April 9, 1887 at 15 min past 10 A.M.  
 at request of Geo. H. Fullerton.  
 Frank A. Liberia county recorder.  
 By Geo Bugbee. Deputy.



Cucamonga Ave.