

# MAP OF Barber's Subdivision

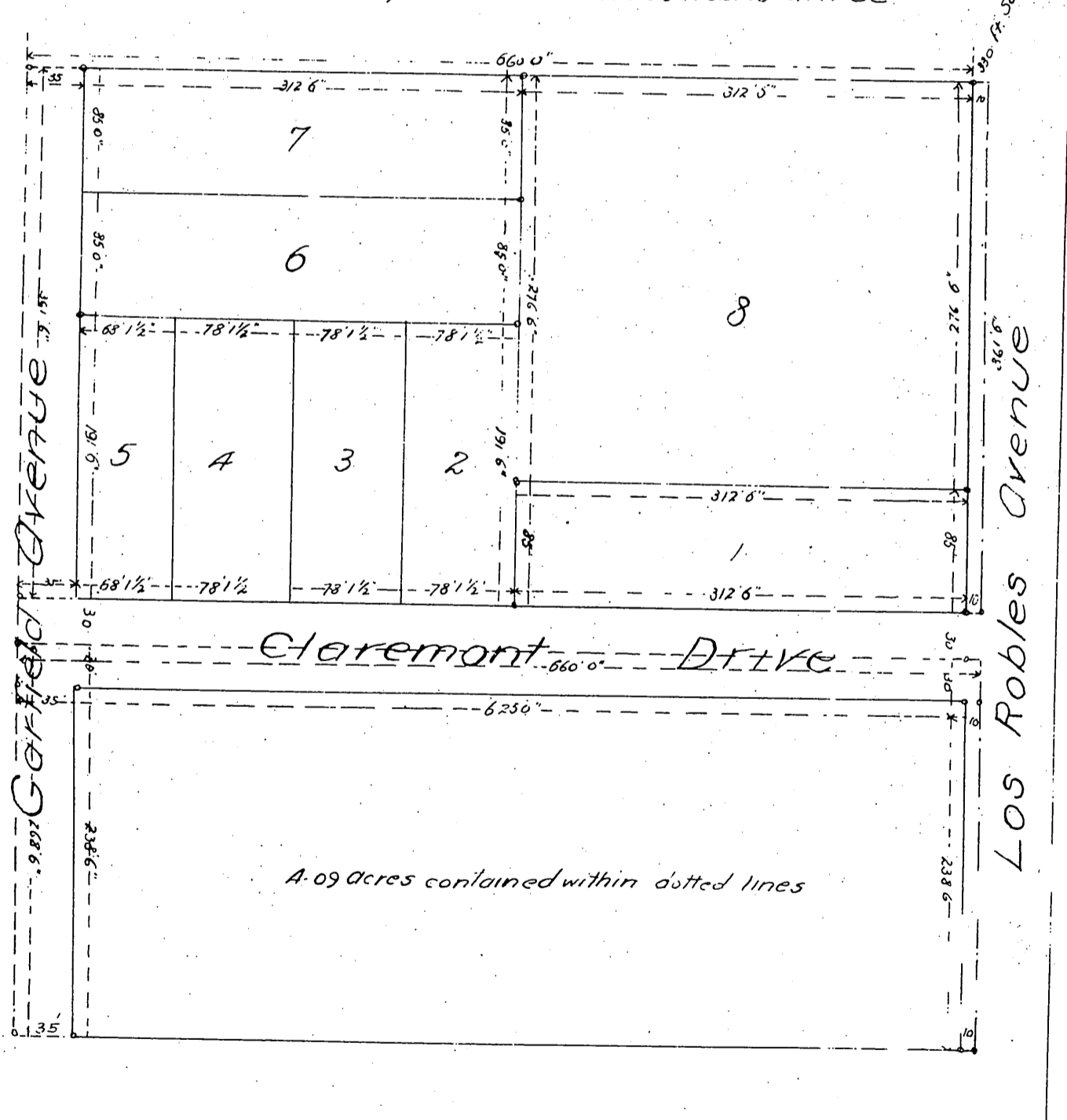
of 10 acres in Block "R" of "Painter and Ball's  
Addition to Pasadena"

Los Angeles Co. Cal.

Scale 50 ft. = one inch

Simpson & Archer Architects & Civil Engrs.

Note stakes are placed 10 ft. in on Los Robles Avenue



A full, true and correct copy of the original  
(reduced to the scale of 100 feet to one inch)  
recorded April 13, 1887 at 17 min past 9 A.M.  
at request of O. S. Barber  
Frank N. Gibson County Recorder  
By Geo. Dugbee Deputy