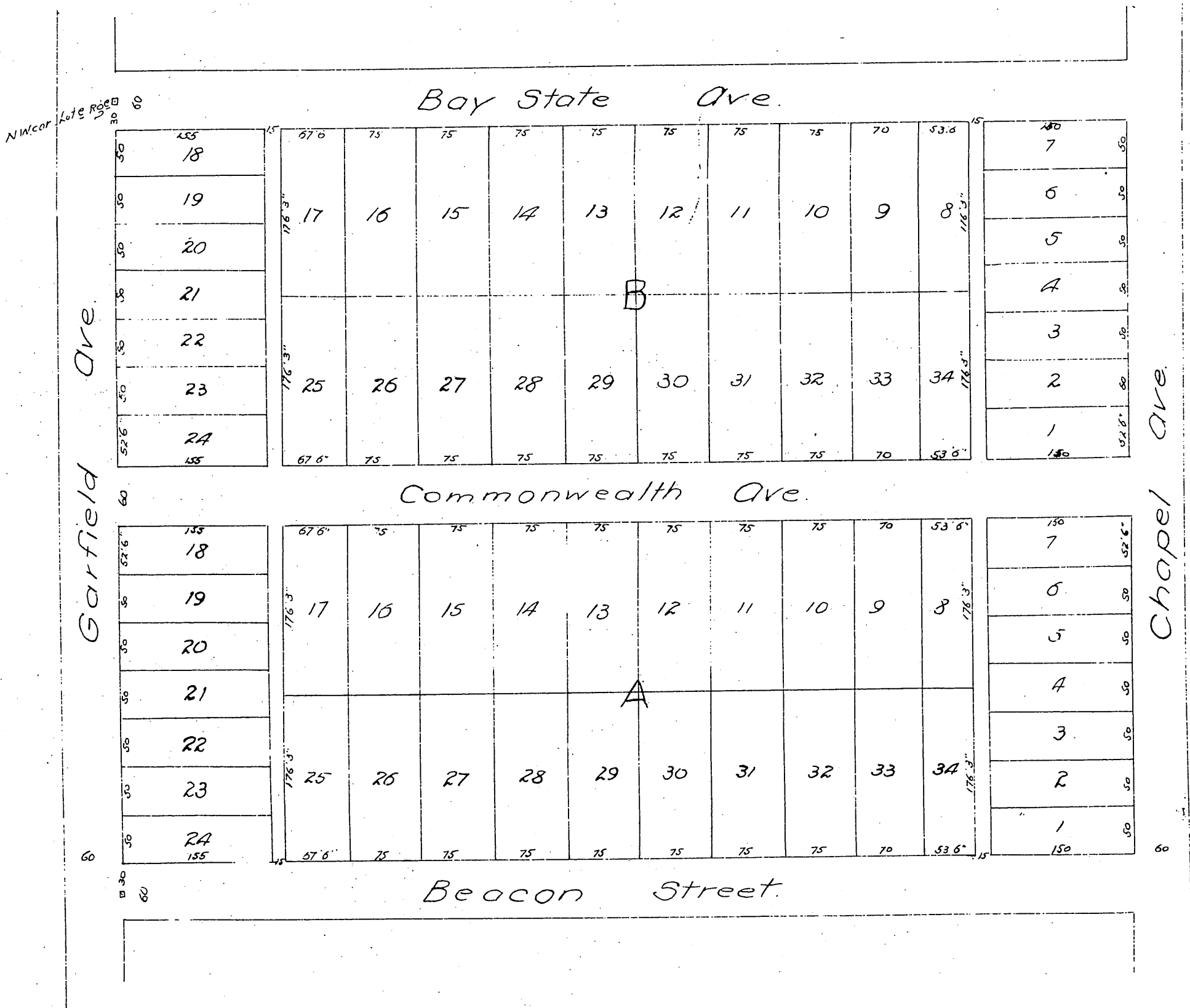


MAP
 OF
 R. F. Bishop's Subdivision
 Lots $\frac{1}{2}$ & 10 R. 8. & Dot $\frac{1}{2}$ & 10 R. 8.
 Alhambra Addn. Tract.
 Dec. 20, 1886. W. H. Whittemore Sur.
 Scale 75 ft. 1 in.



A full, true and correct copy of the original
 (reduced to the scale of 120 feet to one inch
 recorded April 13, 1887 at 50 min. past 10 A.M.
 at request of W. H. Whittemore.

Frank A. Gibson County Recorder
 By Geo. Bugbee Deputy