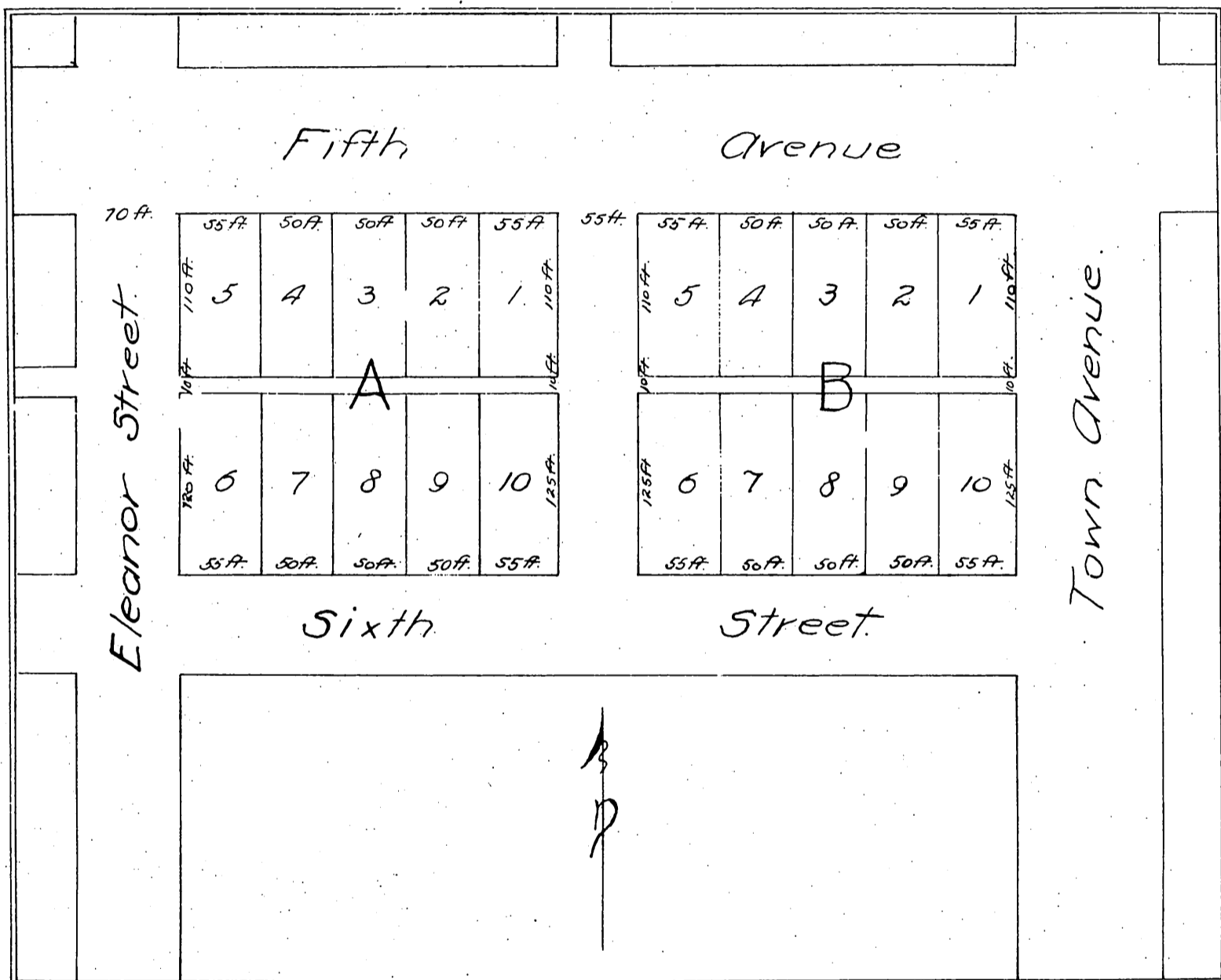


MAP
 OF
Palmer's Subdivision
 of the North half of Block 147
 Town of Pomona
 Jas. T. Taylor, Surveyor Jan. 1886.
 Scale 50 feet to 1 inch.



A full, true and correct copy of the original
 (reduced to the scale of 100 feet to one inch)
 recorded April 13, 1887 at 11 A.M. at request
 of E. T. Palmer.

Frank A. Gibson County Recorder
 By Geo. Hugbee Deputy