

Rubio Tract

Situate South of Los Angeles City

Surveyed March 2, 1887 by Wm Moore Surveyor.

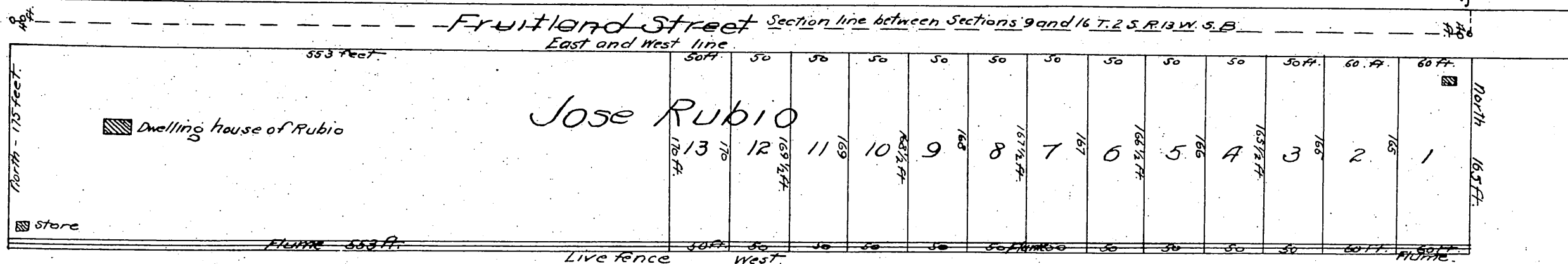
Keller Heirs.

Sec. 16 T. 2 S. R. 13 W.

S.W. cor. of East 1/2 of Sec. 9 T. 2 S. R. 13 W.

R.R.

Alameda St.



Starway Orchard

A full, true and correct copy of the original
 recorded April 13, 1887 at 32 min. past 2 P.M.
 at request of C Cabot

Frank Allison County Recorder.
 By Geo Bugbee Deputy.