

MAP OF THE Barcus Tract

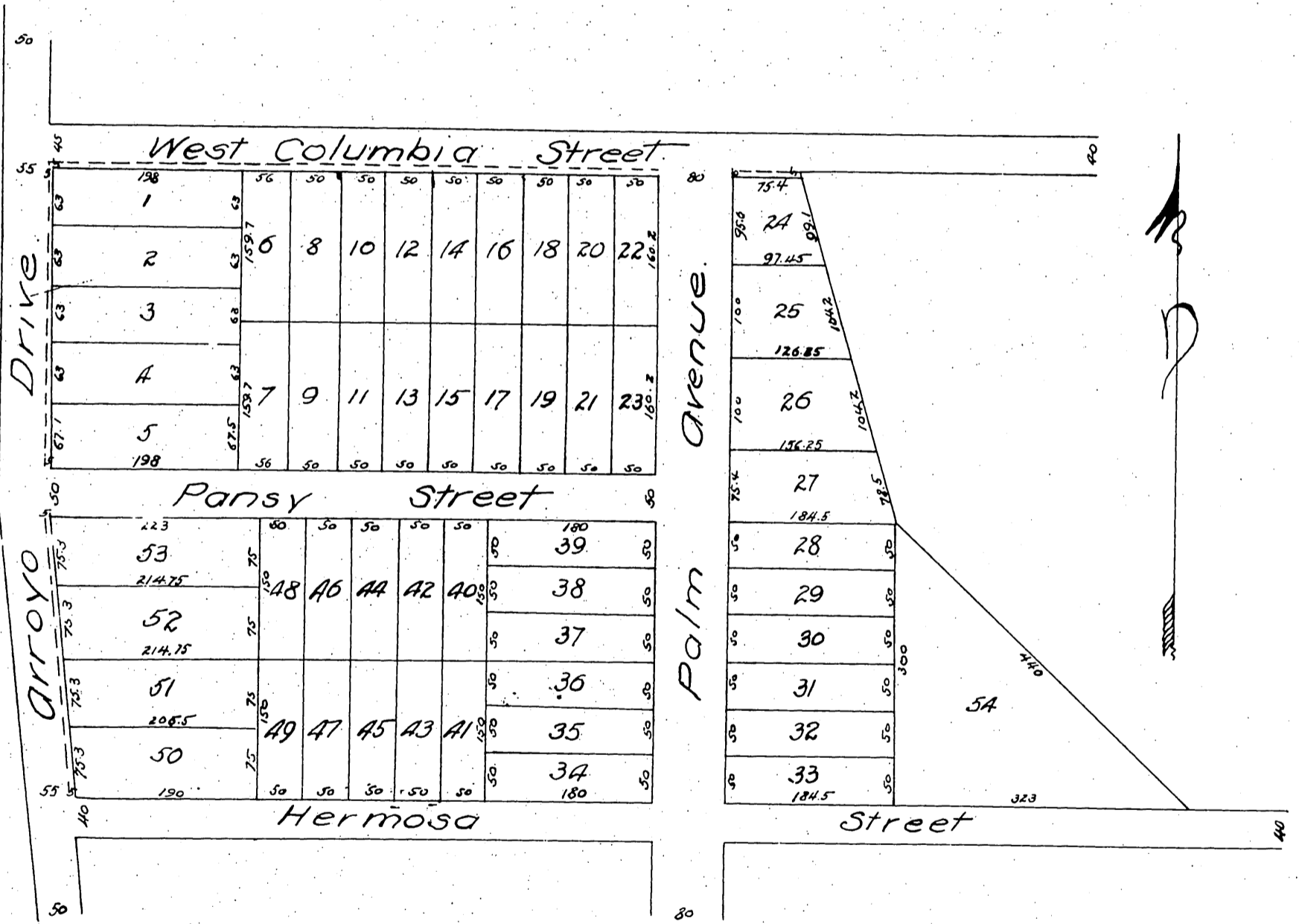
Being a subdivision of the land marked Barcus
on the map of the San Gabriel Orange Grove Assn.

Recorded in Book 2, Pages 556 to 559

Miscellaneous Records.

Surveyed March 1887 by Robbins & Phillips Surveyors

Scale 80 ft to the inch.



A full, true and correct copy of the original
(reduced to the scale of 150 feet to one inch)
recorded April 13 1887 at 16 min. past 3 P.M.
at request of G.W. Glover Jr.

Frank Alibson. County Recorder.
By Geo Bugbee. Deputy.