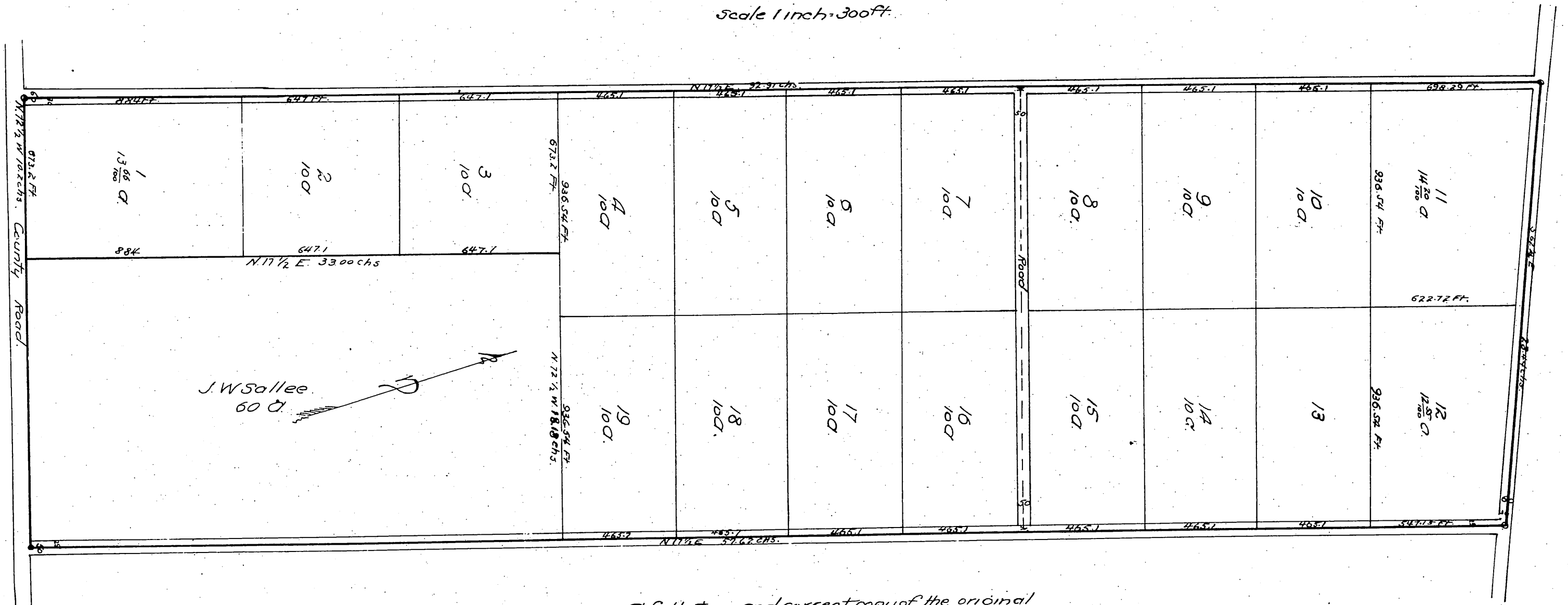


Official
PLAT
 OF
Firey & Rhorer's Subdivision
 of the Soto Tract of the Rancho San Jose,
 Pomona, Cal.

Jan 4 1887 Reed & Co. Civil Engineers.
 Scale 1 inch = 300 ft.



A full, true and correct copy of the original
 (reduced to the scale of 400 feet to one inch)
 recorded April 14, 1887 at 11 A.M. at request
 of F. P. Firey.
 Frank A. Gibson County Recorder.
 By Geo. Bugbee Deputy.