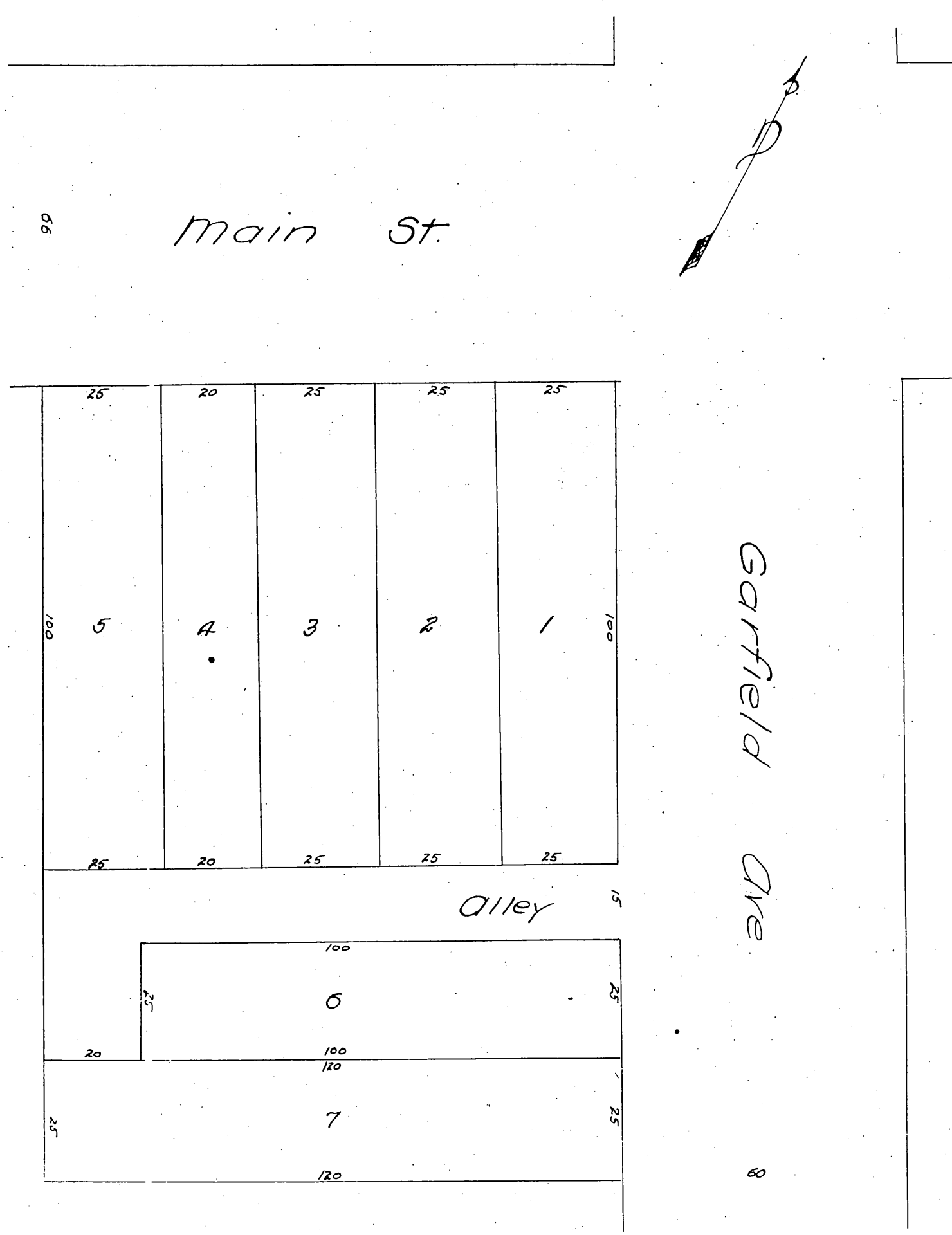




MAP
 OF
 Searle's Re-subdivision
 of Lots 4 & 5 H.W. Stanton's Subdivision.
 Alhambra Cal.
 1886



A full, true and correct copy of the original
 recorded April 14, 1887 at 15 min. past 11 A.M.
 at request of H.W. Stanton.
 Frank A. Gibson. County Recorder.
 By Geo. Bugbee. Deputy.