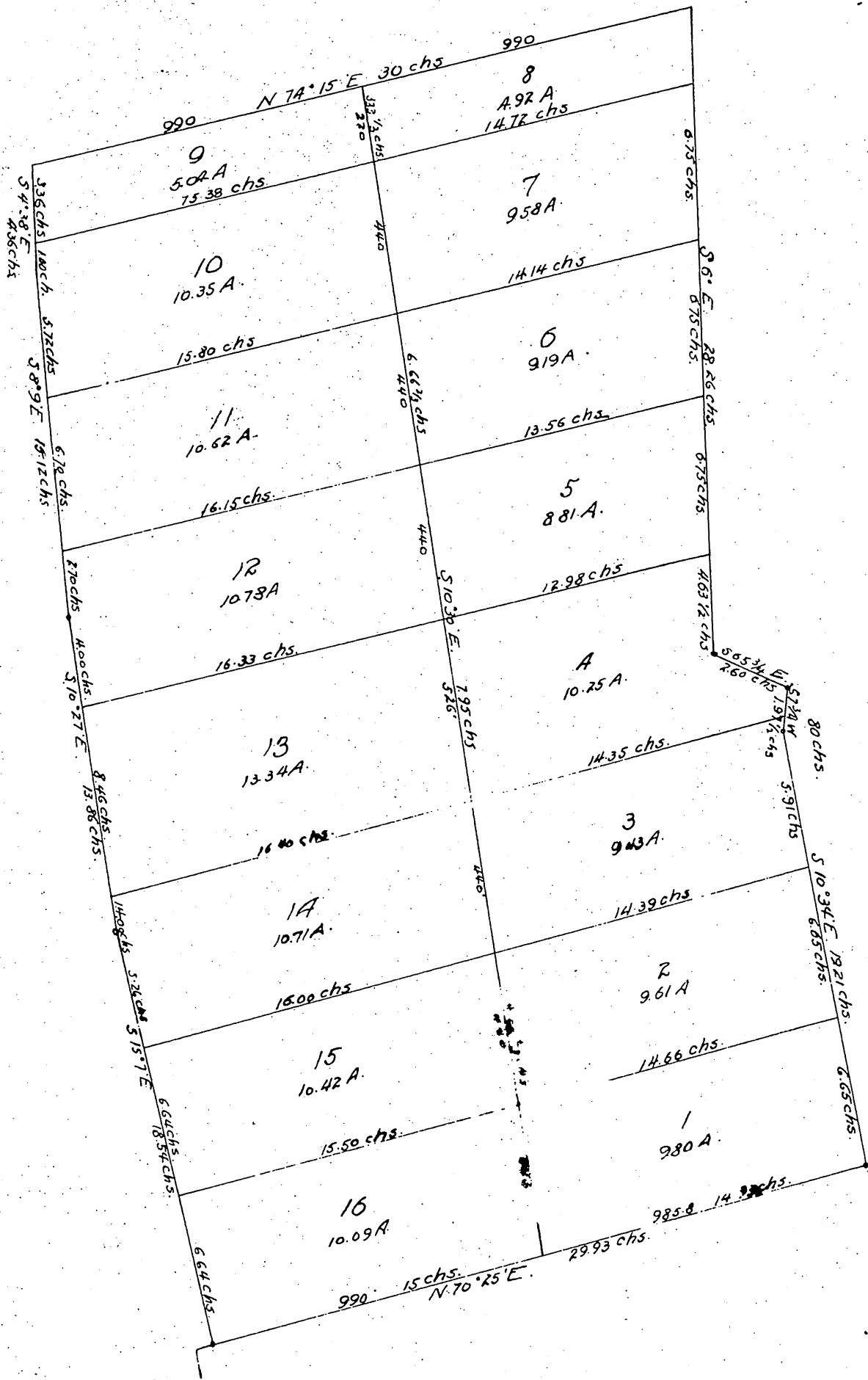


Townsend's Subdivision  
 of the South 152 acres of the North 172 acres of lot 29, Block A,  
 Lake Vineyard Lands  
 E. M. Jessup Surveyor Feb. 1886  
 Scale 4 chains = one inch.



A full, true and correct copy of the original  
 (reduced to the scale of 6 chains to one inch)  
 recorded April 15, 1887 at 30 min. past 11. A.M.  
 at request of S. Townsend.  
 Frank A. Gibson County Recorder.  
 By Geo. Bugbee Deputy.