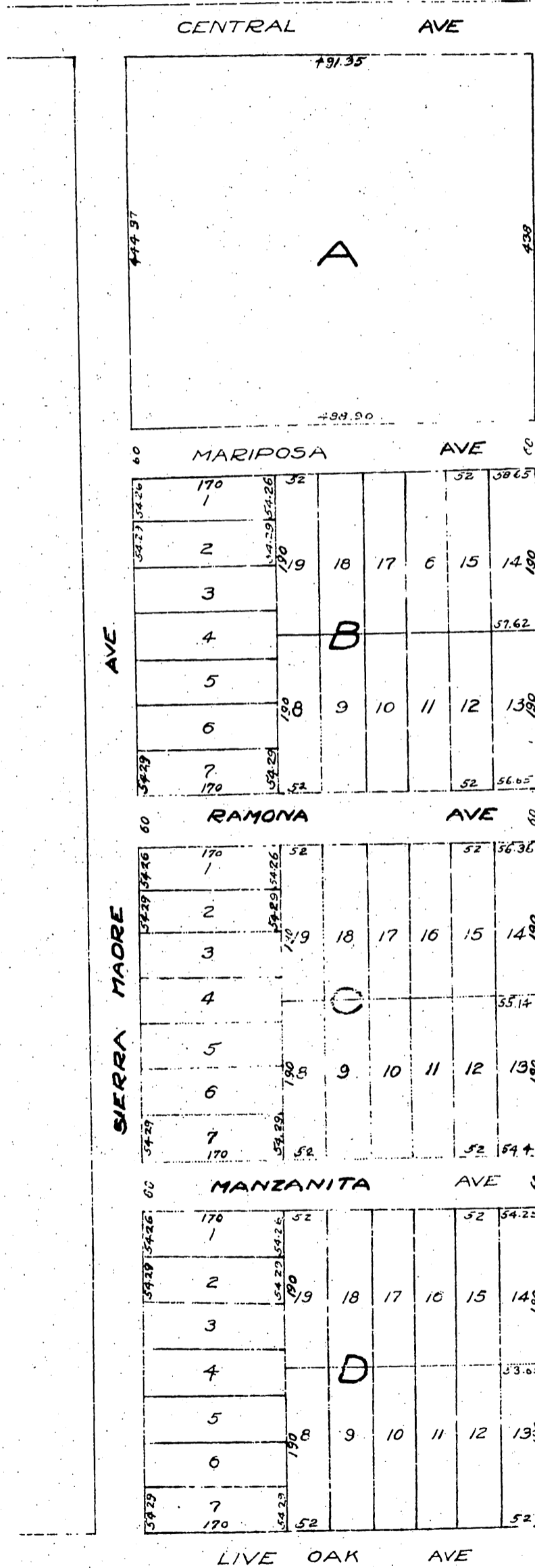


Map  
of  
**Andrew's Subdivision**  
of West half of Lot 1, Sierra Madre Tr.  
Sierra Madre, L.A. Co. Cal.  
Surveyed Nov. 1886 by J.M. Willard C. Engr.

Scale 100ft = 1inch.



Recorded at request of W.S. Andrews, April 15, 1887.