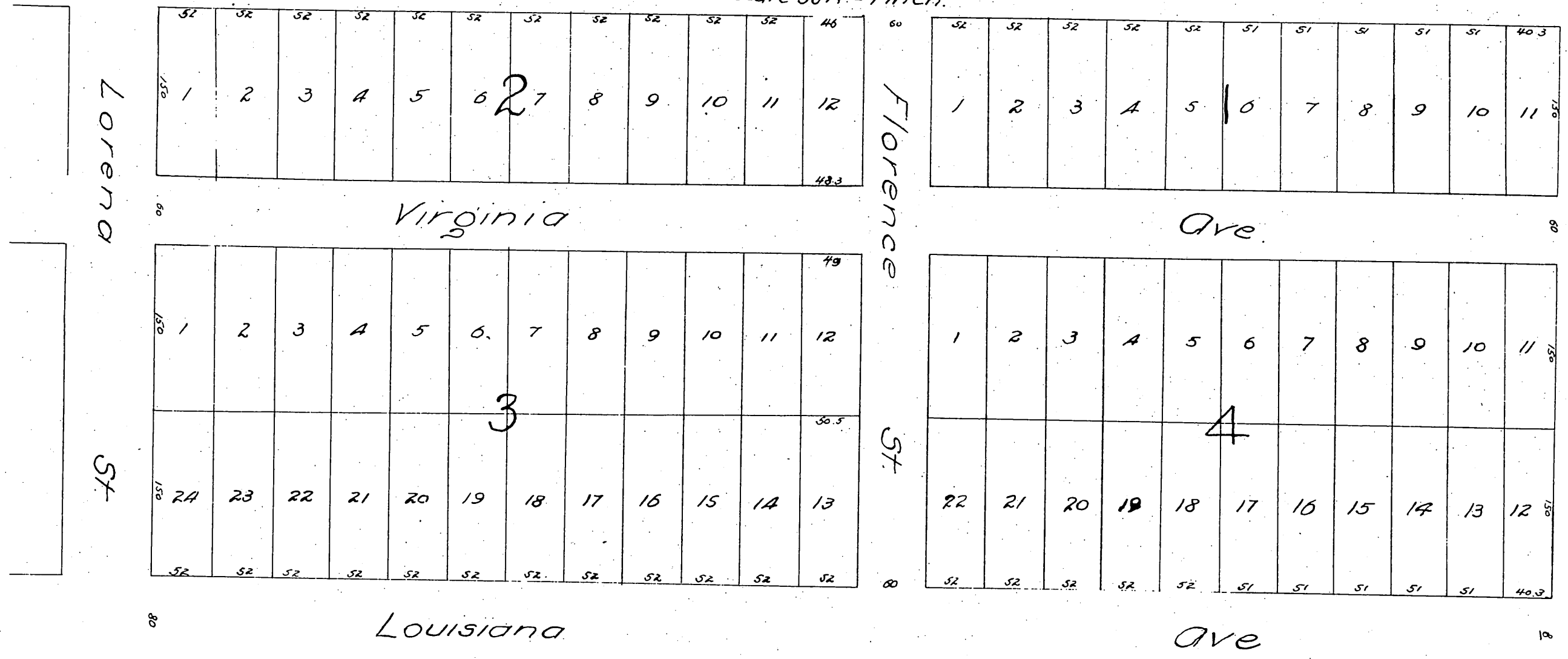


MAP
 OF
S 1/2 Lot 5 Block F. Hancock Survey
 in East part of
Los Angeles City
 Subdivided by W.H. Tinker ^{P.E.} at request of M.L. Wicks
 February 1887

scale 50 ft = 1 inch.



A full, true and correct copy of the original
 (reduced to the scale of 100 feet to one inch)
 recorded April 15, 1887 at 54 min past 4 P.M.
 at request of M. L. Wicks
 Frank A. Gibson. County Recorder.
 By Geo. Bugbee. Deputy.