

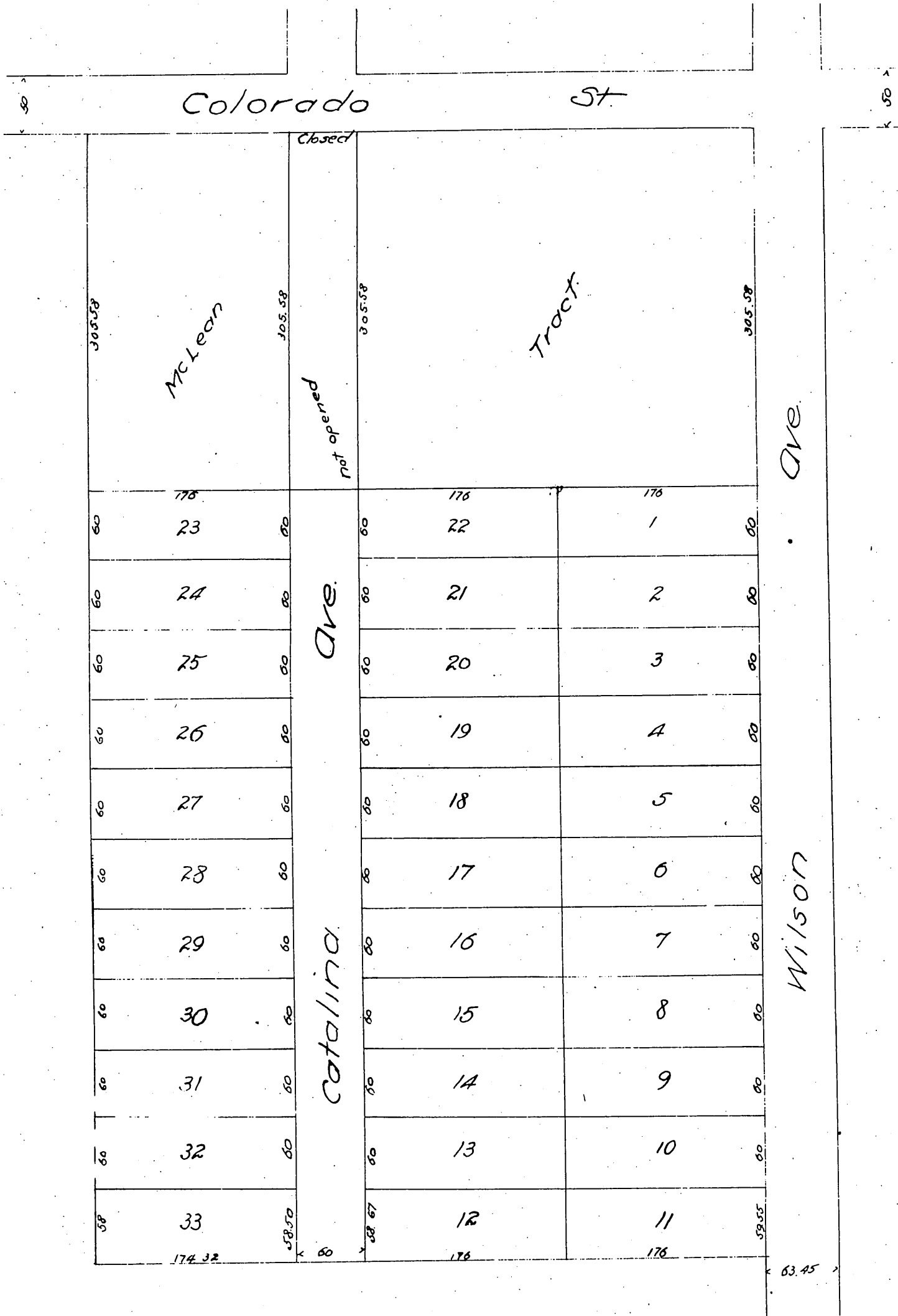
MAP OF H. W. Ogden's Subdivision

Lot 3 Block 2 of the Lake Vineyard Land and Water Assn. Pasadena.

Los Angeles Co. Calif.

Surveyed Mar. 1887 by J. Norton C.E.

Scale 60 ft. to 1 inch.



A full, true and correct copy of the original
(reduced to the scale of 100 feet to one inch)
recorded April 16, 1887 at 32 min. past 1 P.M.
at request of H. W. Ogden.

Frank A. Wilson County Recorder.
By Geo. Engle Deputy.