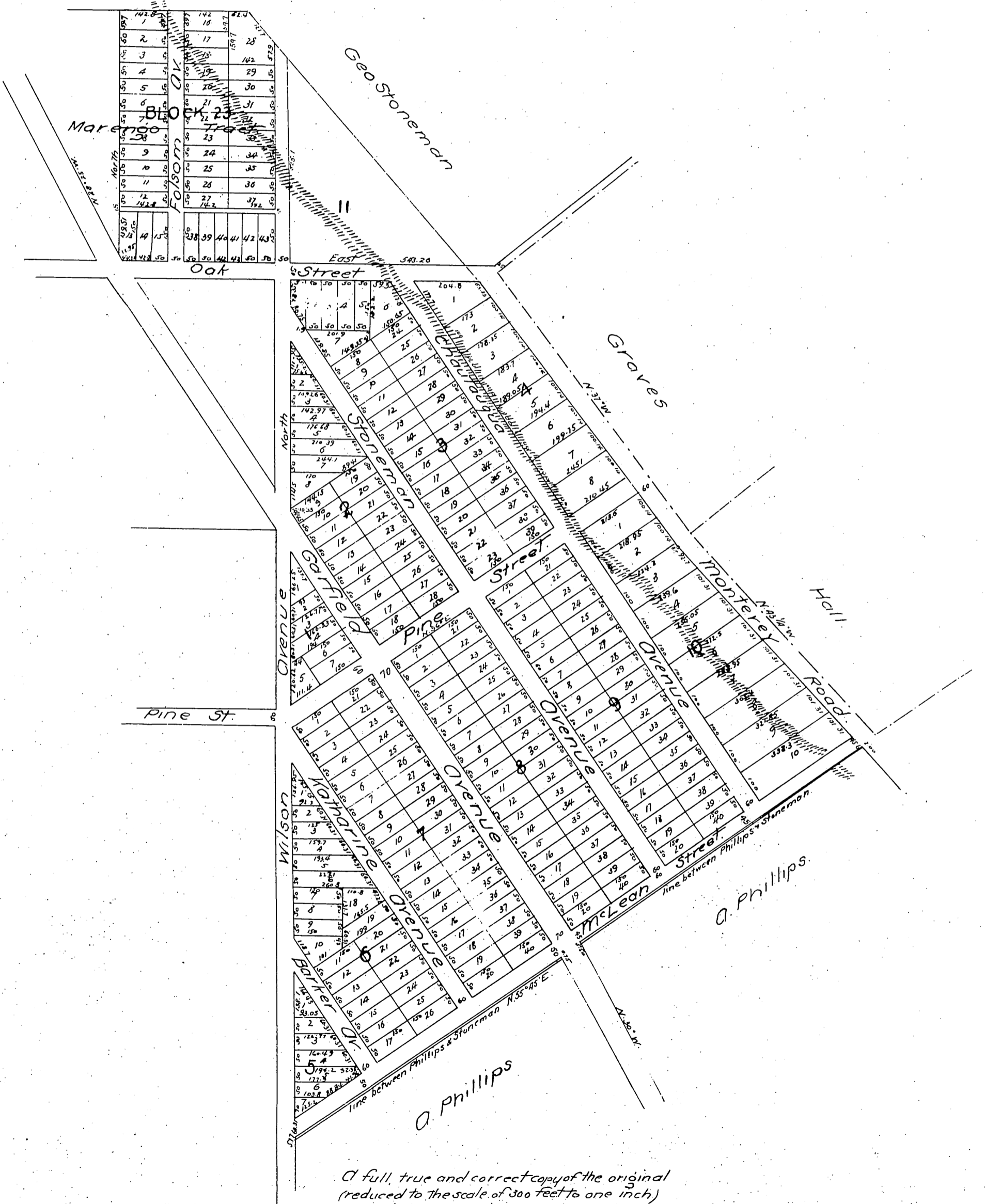


# MAP OF THE Stoneman Tract Los Angeles County Cal.

Being a portion of the Rancho San Pascualito  
Surveyed Apr. 13 87 by Hansen & Solano

True Courses Variation 14° 30' East

Scale of 1 inch to 200 feet



A full, true and correct copy of the original  
(reduced to the scale of 300 feet to one inch)  
recorded April 22, 1887 at 35 min. past 9 o'clock  
at request of Los Angeles Land Bureau.

Frank A. Tolson County Recorder.  
By Geo. Eugene Deputy.