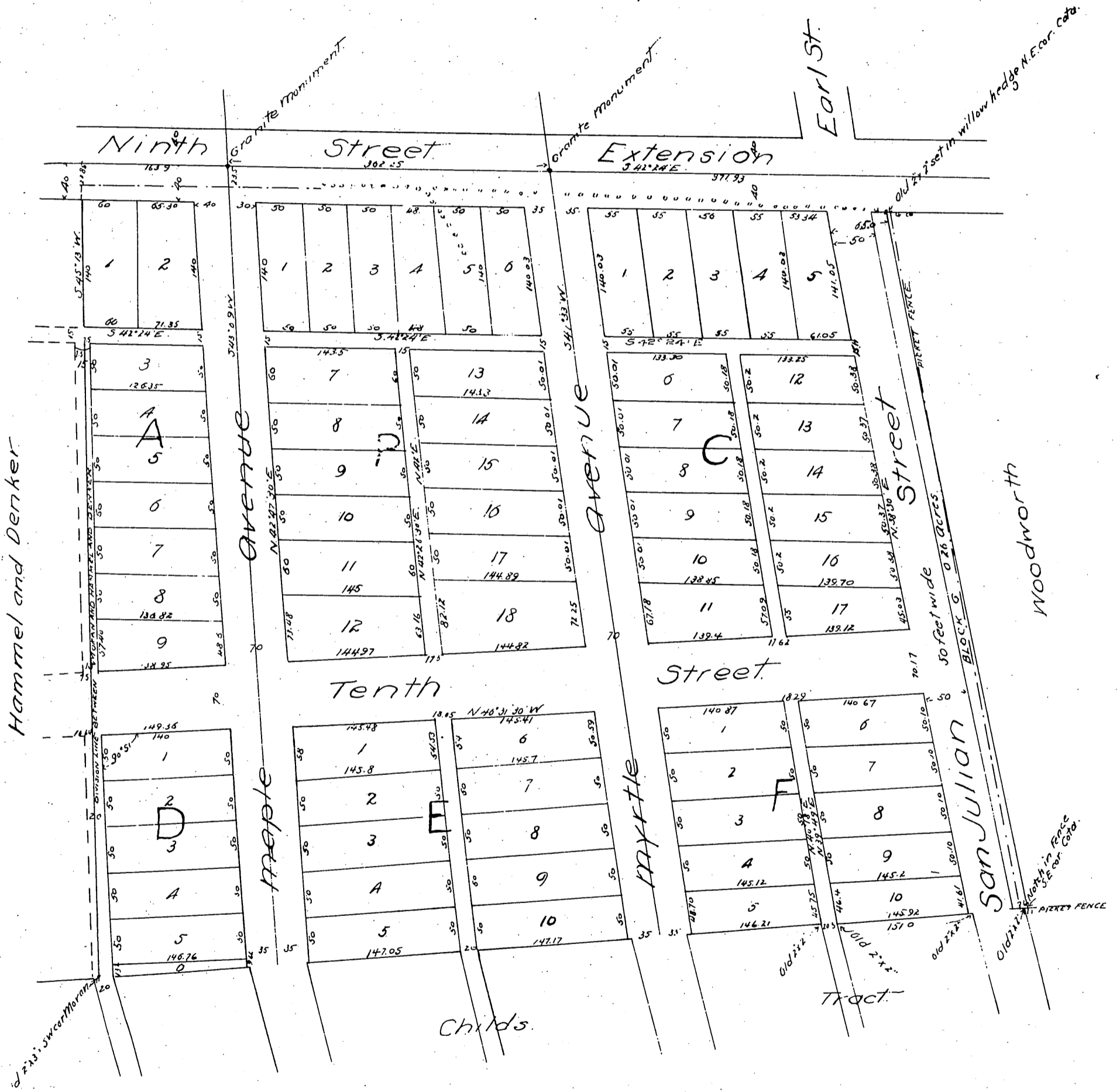


MAP OF THE Moran Tract

Situated in the City of Los Angeles Cal
Subdivided at the request of Mr. J. P. Moran
by Fred Eaton C.E. in April 1887.



A full, true and correct copy of the original.
(reduced to the scale of 120 feet to one inch)
recorded April 22, 1887 at A. P. M. at request
of John P. Moran.

Frank Albigson County Recorder
Deputy