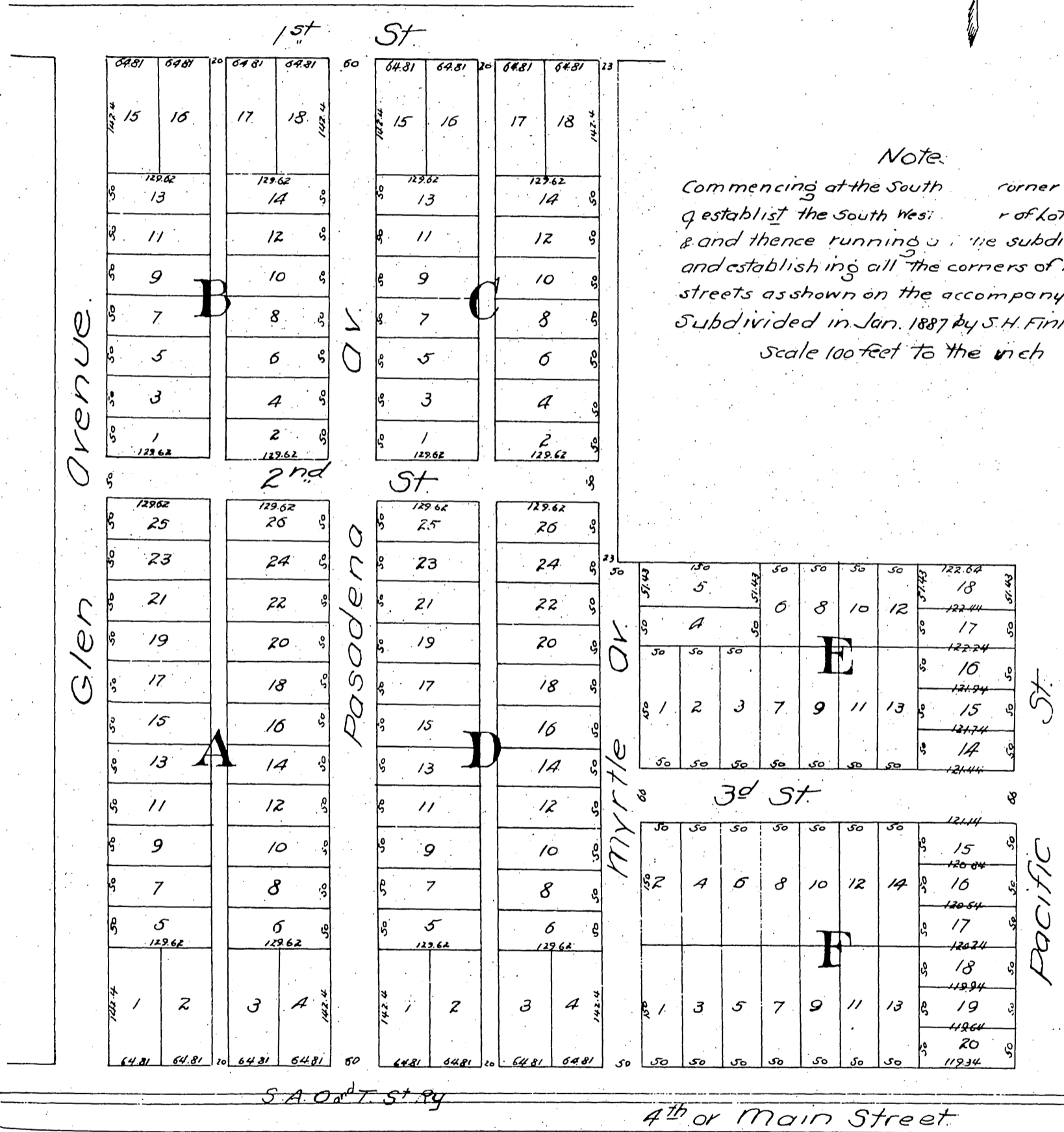




Bundy's Addition to Tustin Cal.

Being lots Q & S in a part of the Stafford
and Tustin Tract as surveyed by E. R. Nicoles
Nov. 24 1874 a plat of which is on the records of
Los Angeles Co.



A full, true and correct copy of the original
(reduced to the scale of 150 feet to one inch)
recorded April 25, 1887 at 35 min. past A. P. M.
at request of S. Washburn.

Frank A. Gibson County Recorder
By Geo. Englee Deputy