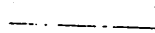
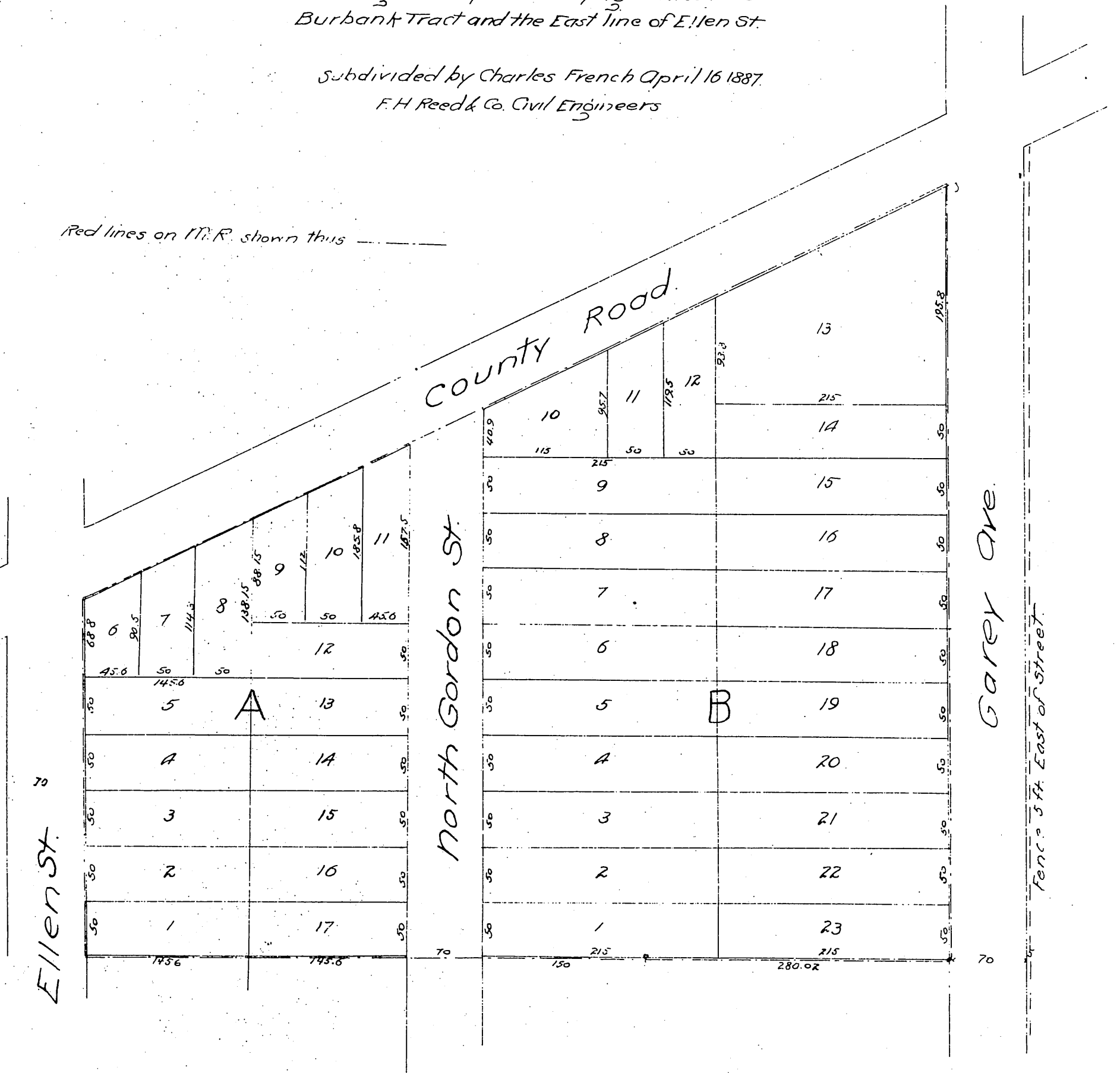


Official  
**PLAT**  
 of the North ten acres of the  
**Burbank Tract**  
 Pomona Los Angeles Co. Cal.  
 including the strip of land lying between the  
 Burbank Tract and the East line of Ellen St.

Subdivided by Charles French April 16 1887.  
 F.H. Reed & Co. Civil Engineers

Red lines on M.R. shown thus 



A full, true and correct copy of the original  
 recorded April 27, 1887 at 25 min past 11 A.M.  
 at request of Charles French.

Frank N. Gibson. County Recorder.  
 By W. Bugbee. Deputy.