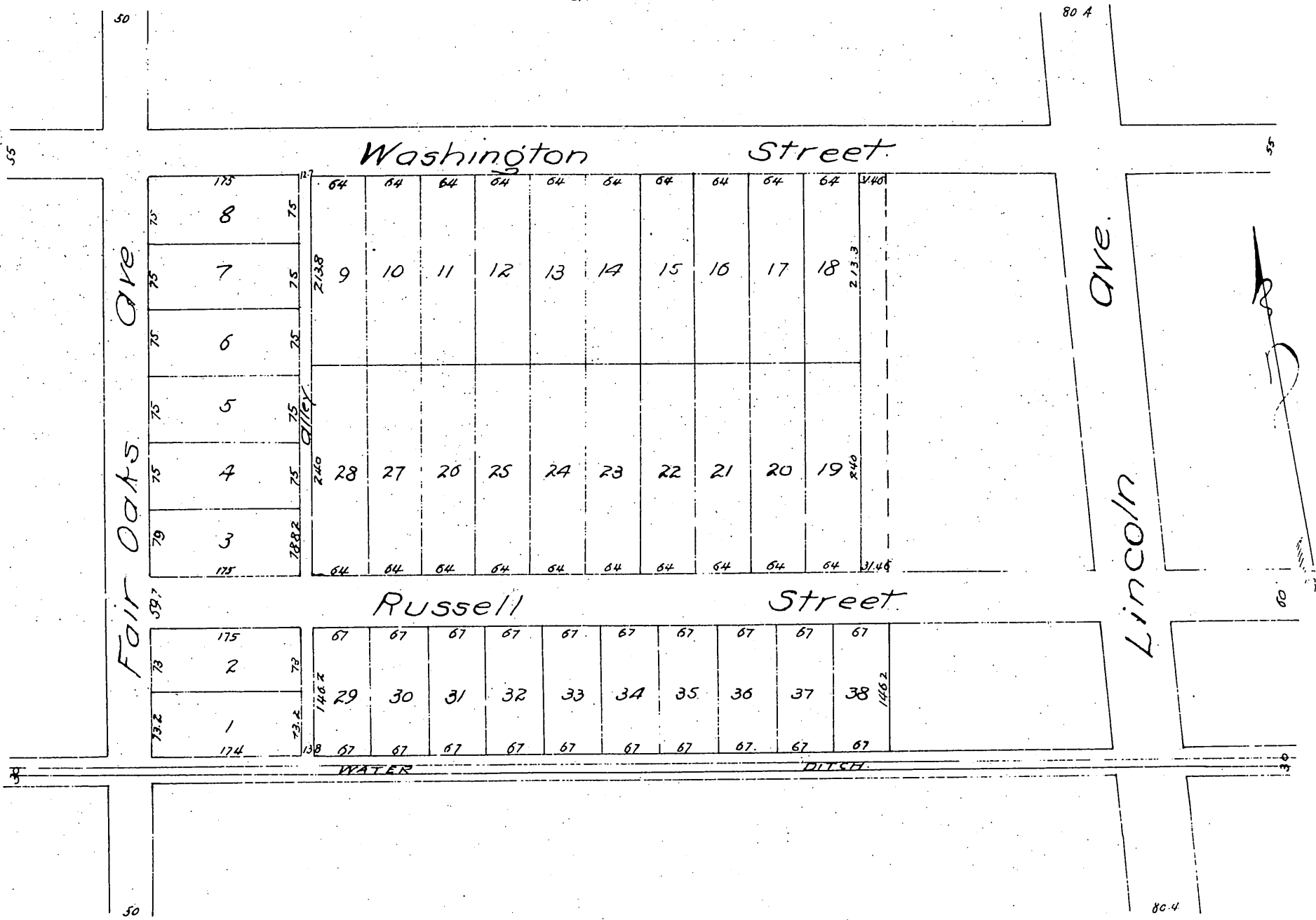




MAP
 OF THE
I. A. Willis and G. D. Willis
 Subdivision of Lot 21, Block A
 San Pasqual Tract
 Pasadena.
 Surveyed April 1887 by Riggins & Phillips Survs.
 Scale 100 ft. to the inch.



A full, true and correct copy of the original
 (reduced to the scale of 150 feet to one inch)
 recorded April 27 1887 at 55 min. past 1 P.M.
 at request of I. A. and G. D. Willis
Frank A. Gibson County Recorder
By George Bugbee Deputy.