

MAP

OF

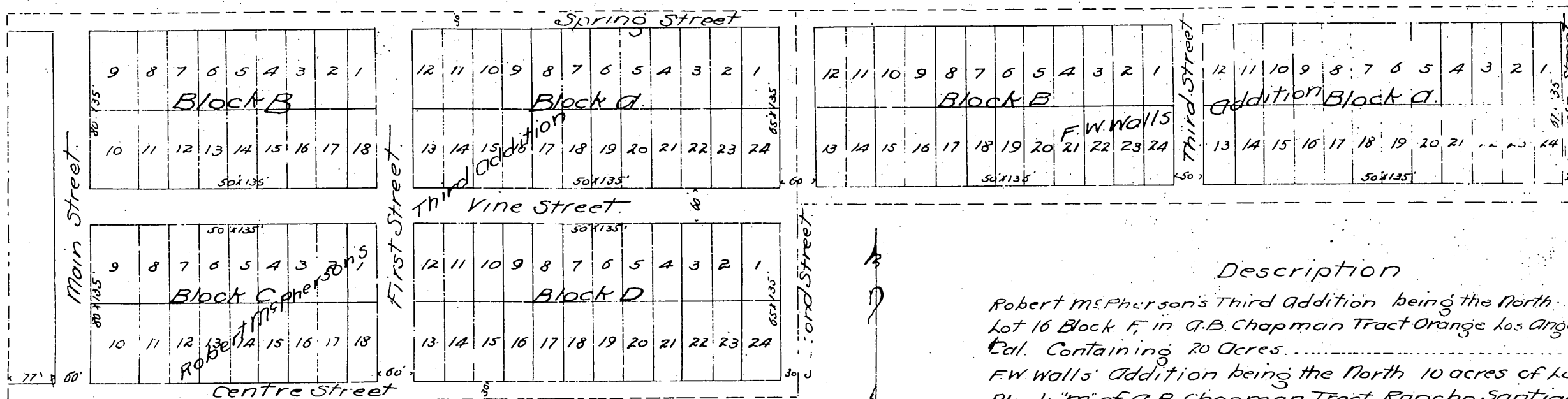
Robert McPherson's Third Addition

AND

F.W. Walls' Addition to McPherson

Surveyed by William Bathgate

Scale 120 feet to 1 inch.



Description

Robert McPherson's Third Addition being the North half of Lot 16 Block F, in A.B. Chapman Tract Orange Los Angeles Co. Cal. Containing 20 Acres.

F.W. Walls' Addition being the North 10 acres of Lot 2 in Block "M" of A.B. Chapman Tract Rancho Santiago de Santa Ana

A full, true and correct copy of the original
 (reduced to the scale of 200 feet to one inch)
 recorded April 28, 1887 at 55 min. past 8
 A.M. at request of Robert McPherson.

Frank A. Gibson. County Recorder
 By Geo. Bugbee. Deputy