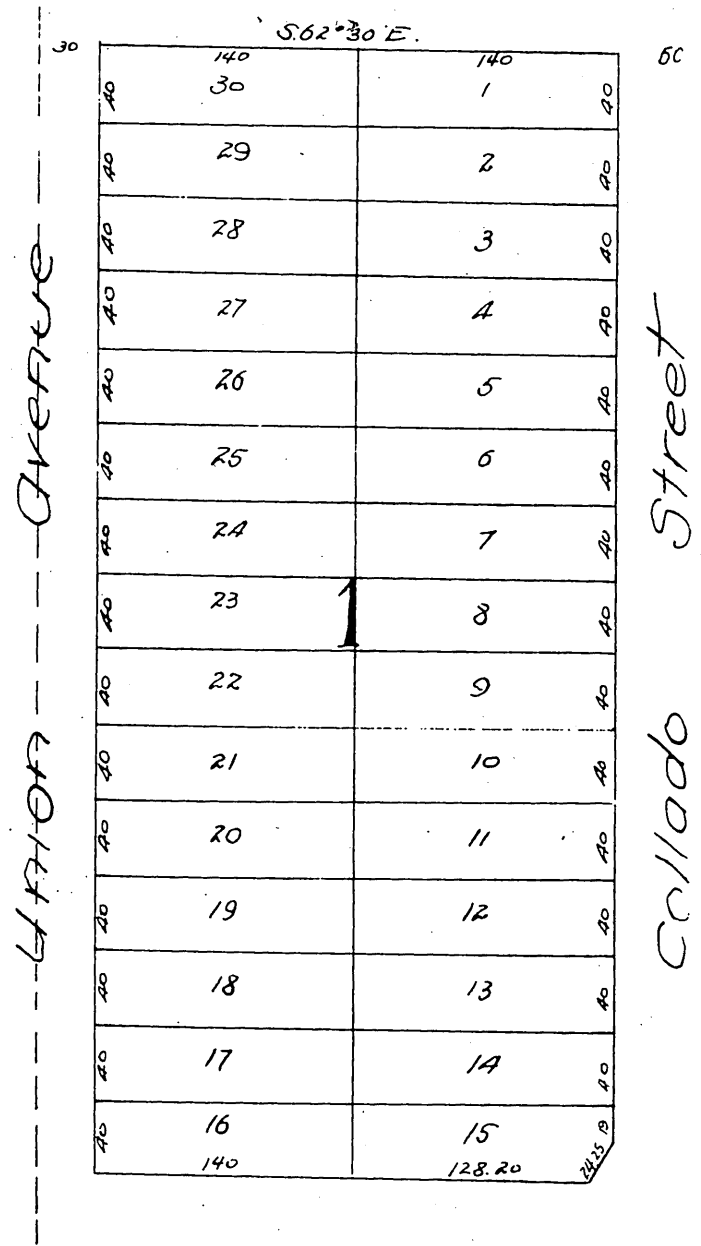


Re Subdivision
of part of
Block 1, Colina Park,
Los Angeles City, Cal.

Being Lots 1 to 20 inclusive of said Block, as
shown on map of said Colina Park recorded
in Book 7 pages 36 and 37 of
Miscellaneous Records, Los Angeles County.
Scale 100 feet to 1 inch.



A full, true and correct copy of the original
recorded April 30, 1887 at 48 min. past 8 o'clock P.M.
at request of T. O. Harvey.
Frank A. Gibson County Recorder
By Geo. Dughee Deputy.