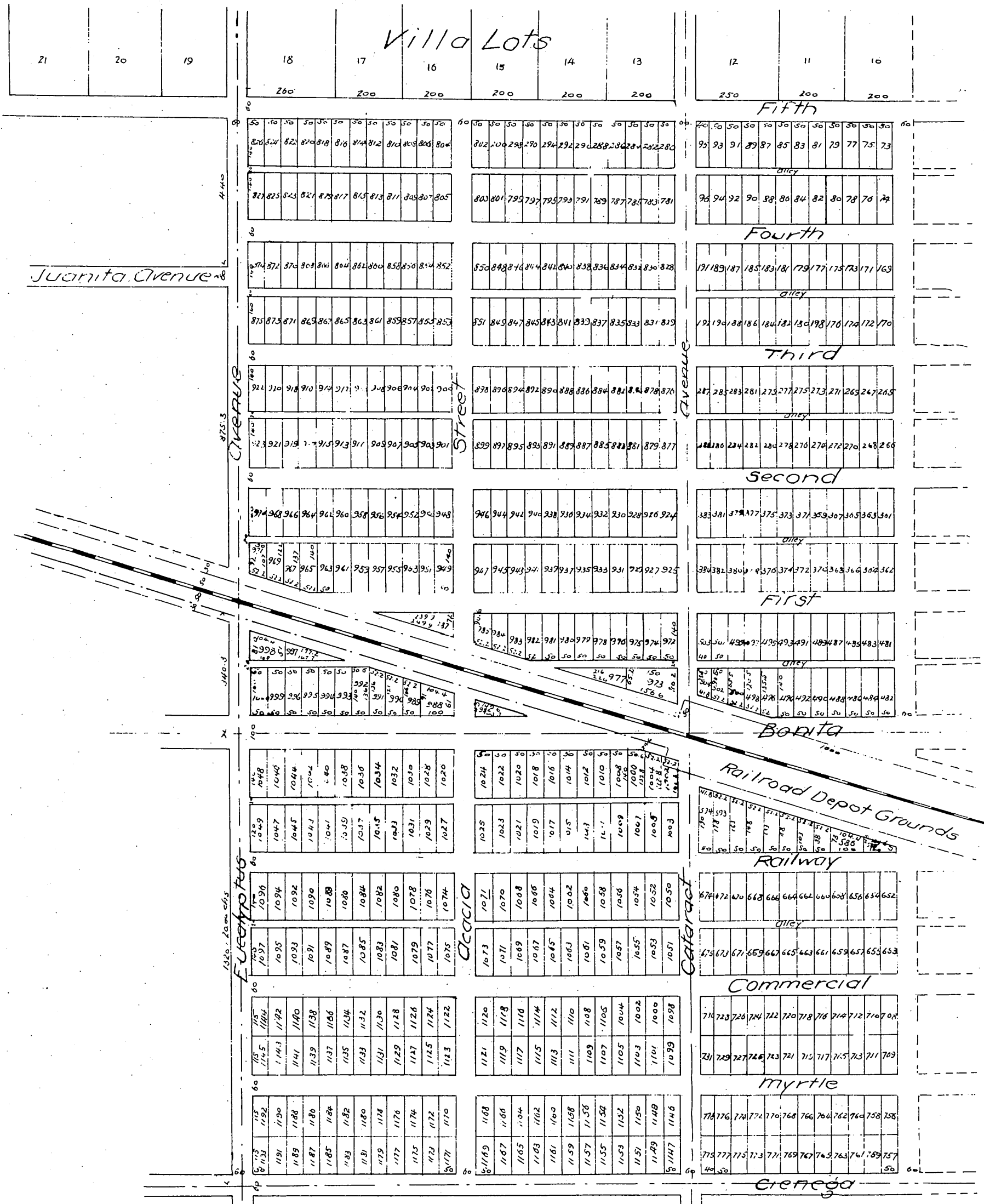




# MAP

of the Town of  
**San Dimas**  
 IN  
 San Jose Ranch  
 Los Angeles County California

Surveyed March 1887 by Burr Bassell C.E.  
 Scale 100 feet per inch.

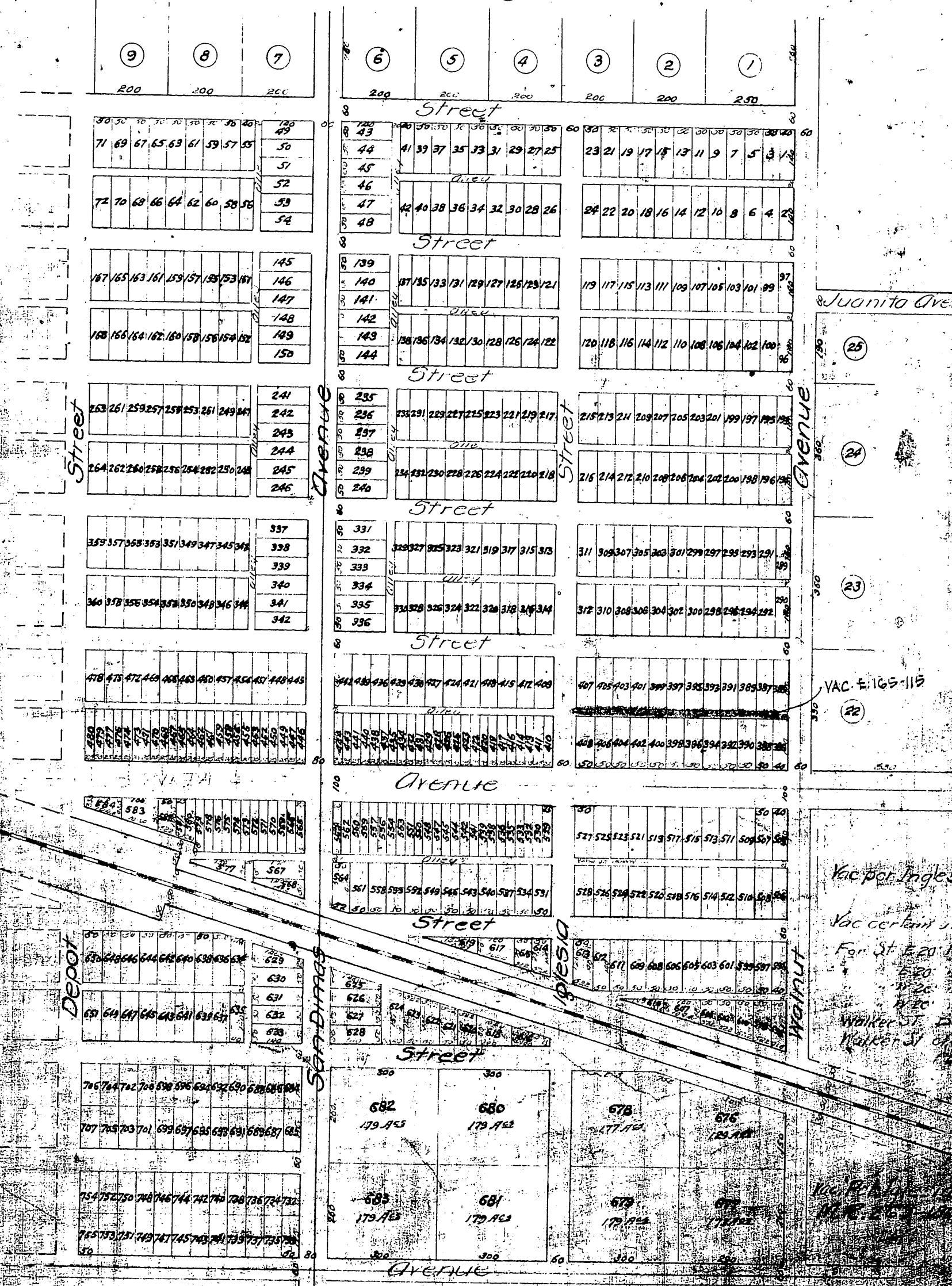


Vac. por. Commercial St. and alley adj lot 624 - E:8-15, R.B. 13-32  
 Lot 427 & 430 to L.A. Co., E:9-193, O.R. 14025-44  
 Por lots 469 & 472 for sewer purp ~ E: 82-169, O.R. 25939-291  
 " vacated Alley " " " ~ E:82-111, O.R. 25732-121  
 " " " " " ~ E:82-135, O.R. 25816-118  
 " " " " " ~ E:85-6, O.R. 27637-359  
 " " " " " ~ E:85-58, O.R. 27803-318  
 Por lot 469 for Sewer Purp ~ E:85-223, O.R. 28496-322  
 Lots 401, 403, 405, 407, 408, por. Lot 404 & 1/2 alley for bldgs. purp ~ E:161-18, O.R. 52178-408  
 Por Lot 235, 236 & 237 for San Dimas Ave - K: 2-3, O.R. 56209-312  
 Por. Lots 139, 140 & 141 for Dimas Ave & 4th St - K: 2-19, O.R. 56077-180

I hereby certify that the lot on the South east corner of Railway Street and Acacia Street in the town of San Dimas should be numbered 1072 and that number 1071 thereon is erroneous.

M. L. Wicks

Villa Lots



Por Lot 193 for Walnut Ave - E:171-114, O.R. 55326-336  
 Por Lot 472 for Alley Purp. D:34-229, D:6862-152  
 Lot 433 to L.A. County D:52-94, O.R. 4586-187  
 Lots 618 & 620 to San Dimas Legion for Assembly Hall. E:9-12, O.R. 13100-341  
 Lots 621 to 628 incl. and por. vac. St. & Alley to San Dimas Legion for park. E:9-13, O.R. 13203-55  
 Vac. E:165-115  
 Vac. per Inglesis Ave & L. Walker St. E:20-113, R.B. 13-32  
 Vac certain alleys. D:12-31  
 For St. E:20-107, 108, 109, 110, 111, 112, 113, 114, 115, 116, 117, 118, 119, 120, 121, 122, 123, 124, 125, 126, 127, 128, 129, 130, 131, 132, 133, 134, 135, 136, 137, 138, 139, 140, 141, 142, 143, 144, 145, 146, 147, 148, 149, 150, 151, 152, 153, 154, 155, 156, 157, 158, 159, 160, 161, 162, 163, 164, 165, 166, 167, 168, 169, 170, 171, 172, 173, 174, 175, 176, 177, 178, 179, 180, 181, 182, 183, 184, 185, 186, 187, 188, 189, 190, 191, 192, 193, 194, 195, 196, 197, 198, 199, 200, 201, 202, 203, 204, 205, 206, 207, 208, 209, 210, 211, 212, 213, 214, 215, 216, 217, 218, 219, 220, 221, 222, 223, 224, 225, 226, 227, 228, 229, 230, 231, 232, 233, 234, 235, 236, 237, 238, 239, 240, 241, 242, 243, 244, 245, 246, 247, 248, 249, 250, 251, 252, 253, 254, 255, 256, 257, 258, 259, 260, 261, 262, 263, 264, 265, 266, 267, 268, 269, 270, 271, 272, 273, 274, 275, 276, 277, 278, 279, 280, 281, 282, 283, 284, 285, 286, 287, 288, 289, 290, 291, 292, 293, 294, 295, 296, 297, 298, 299, 300, 301, 302, 303, 304, 305, 306, 307, 308, 309, 310, 311, 312, 313, 314, 315, 316, 317, 318, 319, 320, 321, 322, 323, 324, 325, 326, 327, 328, 329, 330, 331, 332, 333, 334, 335, 336, 337, 338, 339, 340, 341, 342, 343, 344, 345, 346, 347, 348, 349, 350, 351, 352, 353, 354, 355, 356, 357, 358, 359, 360, 361, 362, 363, 364, 365, 366, 367, 368, 369, 370, 371, 372, 373, 374, 375, 376, 377, 378, 379, 380, 381, 382, 383, 384, 385, 386, 387, 388, 389, 390, 391, 392, 393, 394, 395, 396, 397, 398, 399, 400, 401, 402, 403, 404, 405, 406, 407, 408, 409, 410, 411, 412, 413, 414, 415, 416, 417, 418, 419, 420, 421, 422, 423, 424, 425, 426, 427, 428, 429, 430, 431, 432, 433, 434, 435, 436, 437, 438, 439, 440, 441, 442, 443, 444, 445, 446, 447, 448, 449, 450, 451, 452, 453, 454, 455, 456, 457, 458, 459, 460, 461, 462, 463, 464, 465, 466, 467, 468, 469, 470, 471, 472, 473, 474, 475, 476, 477, 478, 479, 480, 481, 482, 483, 484, 485, 486, 487, 488, 489, 490, 491, 492, 493, 494, 495, 496, 497, 498, 499, 500, 501, 502, 503, 504, 505, 506, 507, 508, 509, 510, 511, 512, 513, 514, 515, 516, 517, 518, 519, 520, 521, 522, 523, 524, 525, 526, 527, 528, 529, 530, 531, 532, 533, 534, 535, 536, 537, 538, 539, 540, 541, 542, 543, 544, 545, 546, 547, 548, 549, 550, 551, 552, 553, 554, 555, 556, 557, 558, 559, 560, 561, 562, 563, 564, 565, 566, 567, 568, 569, 570, 571, 572, 573, 574, 575, 576, 577, 578, 579, 580, 581, 582, 583, 584, 585, 586, 587, 588, 589, 590, 591, 592, 593, 594, 595, 596, 597, 598, 599, 600, 601, 602, 603, 604, 605, 606, 607, 608, 609, 610, 611, 612, 613, 614, 615, 616, 617, 618, 619, 620, 621, 622, 623, 624, 625, 626, 627, 628

Vac portion Commercial St. N.A. 18-32  
 Por. Lots 194 E: 215 for Iglesia St E-Walnut Ave - E:171-113, O.R. 55326-345  
 Reduced to the scale of 300 feet to one inch  
 Recorded April 30, 1887 at request of  
 M. L. Wicks  
 Por Lot 26 for Iglesia St - E:171-114, O.R. 55326-346