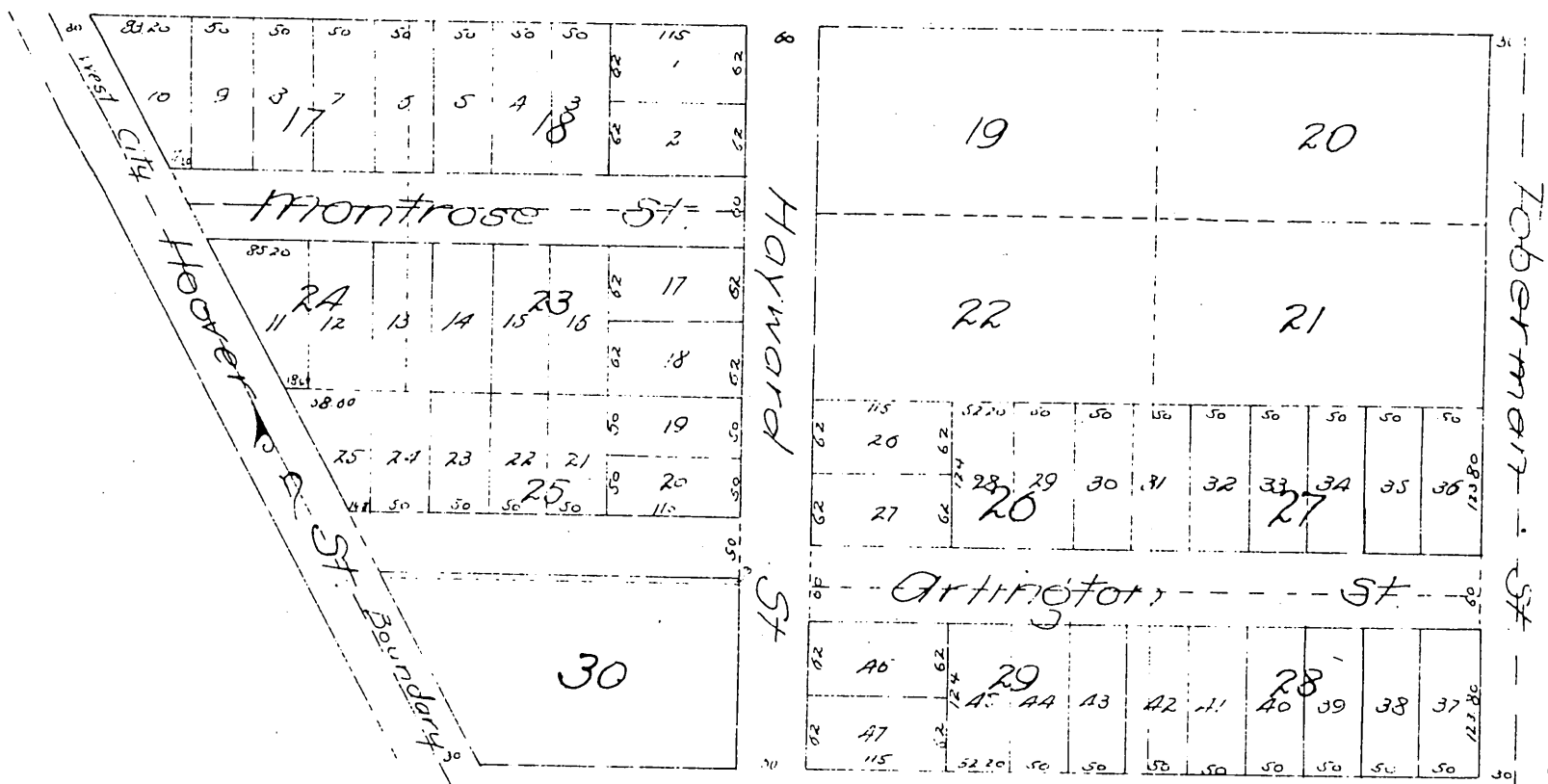


MAP
 OF
 Loughheed's Subdivision
 of Lots 17, 18, 23, 24, 25, 26, 27, 28, 29 of
 The Hoover Tract
 Los Angeles City Cal.

Surveyed Oct. 1885 by W. H. Tinker C.E.
 Scale 50 ft. = 1 in.



A full, true and correct copy of the original
 (reduced to the scale of 150 feet to one inch)
 recorded April 30, 1887 at 4 min. past 12 M.
 at request of C. V. Hall

Frank A. Wilson
 By George R. Hughes

County Recorder
 Deputy