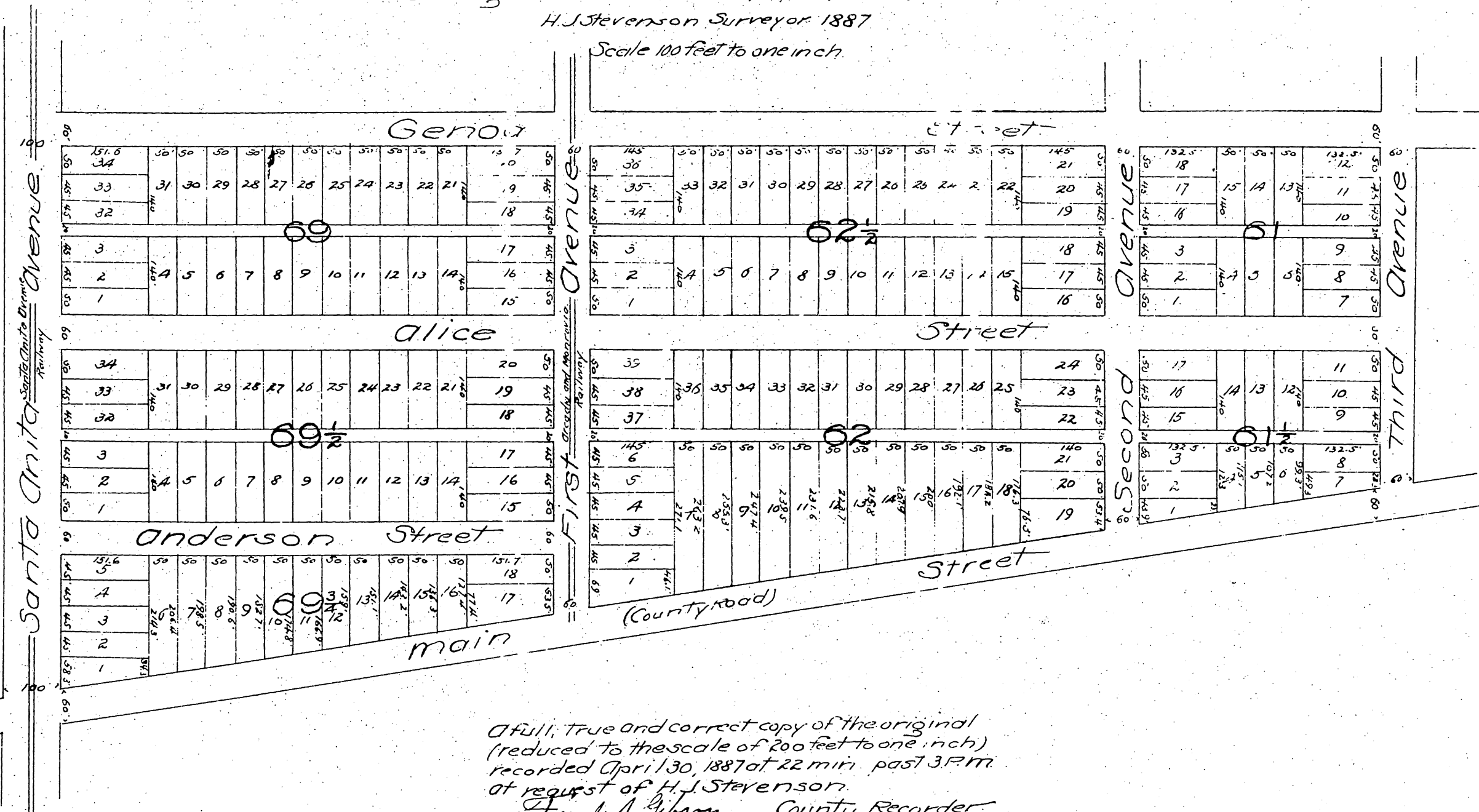


MAP

of a part of
Arcadia
Santa Anita Tract
Los Angeles Co. Cal.

Showing thereon Blocks 61, 61 1/2, 62, 62 1/2, 69, 69 1/2, 71, 71 1/2
H. J. Stevenson Surveyor, 1887

Scale 100 feet to one inch.



A full, true and correct copy of the original
(reduced to the scale of 200 feet to one inch)
recorded April 30, 1887 at 22 min. past 3 P.M.
at request of H. J. Stevenson.

James A. Gibson, County Recorder
By George Bugbee, Deputy.