

# Howes Tract

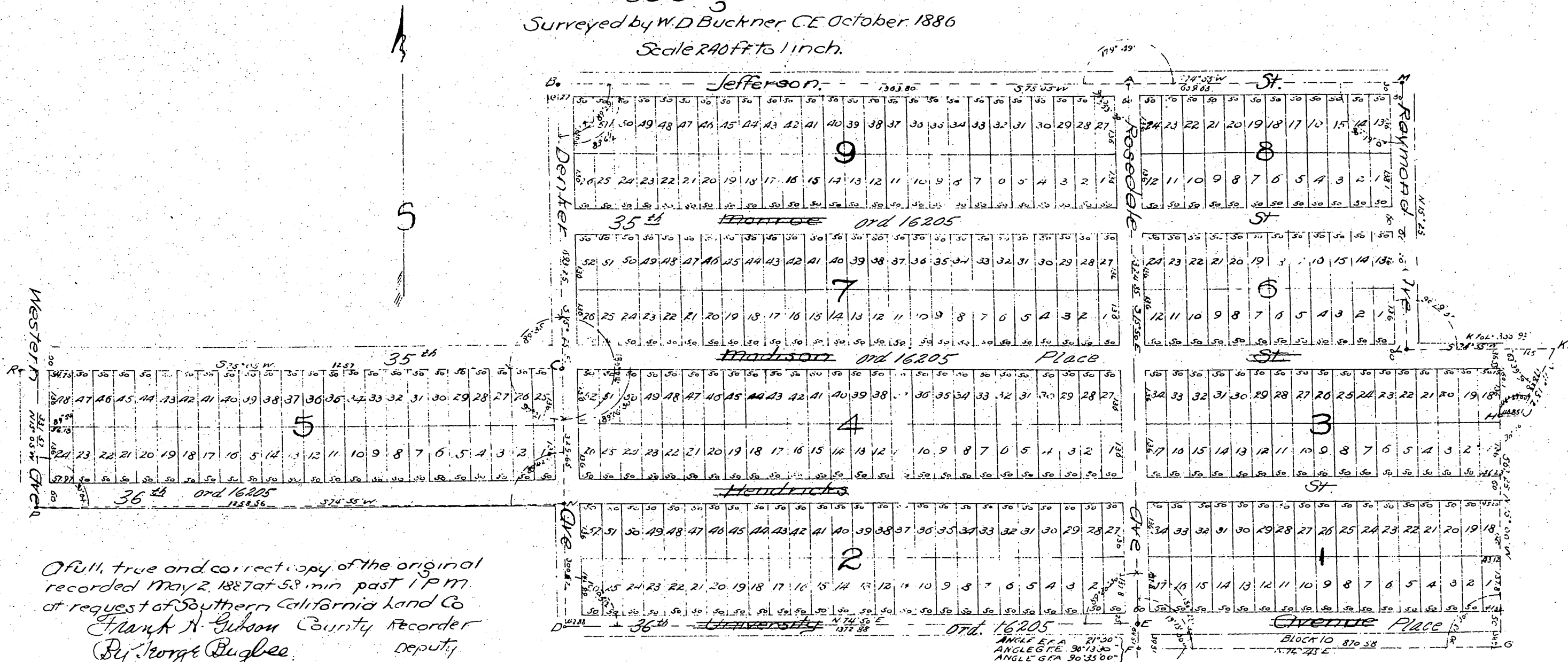
Being a Subdivision of a part of the South East one quarter of Section One in Township Two South of Range Fourteen, West San Bernardino Meridian containing 25 acres, more or less, and also of a part of the South West one quarter of section One in Township Two South of Range Fourteen, West San Bernardino Meridian

Containing Fifty acres more or less

Los Angeles Co. Cal.

Surveyed by W. D. Buckner C.E. October, 1886

Scale 240 ft to 1 inch.



A full, true and correct copy of the original recorded May 2, 1887 at 58 min past 1 P.M. at request of Southern California Land Co  
 Frank N. Gibson County Recorder  
 By George Bugbee Deputy