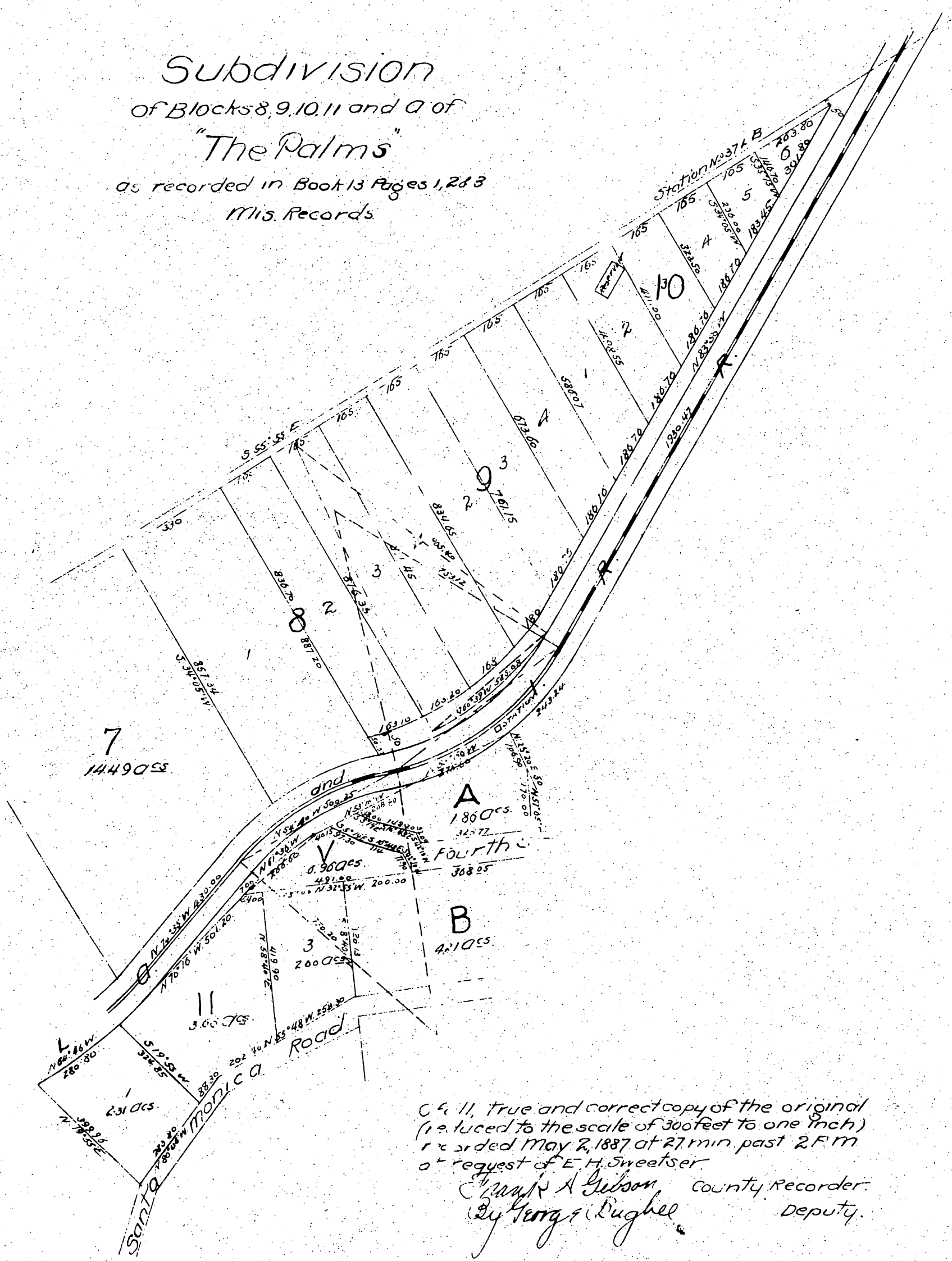


Subdivision
 of Blocks 8, 9, 10, 11 and A of
 "The Palms"
 as recorded in Book 13 Pages 1, 2 & 3
 Mis. Records



C & 11, true and correct copy of the original
 (reduced to the scale of 300 feet to one inch)
 recorded May 2, 1887 at 27 min past 2 P.M.
 at request of E. H. Sweetser
 Frank A. Gibson County Recorder.
 By George F. Dughee Deputy.